



MATRIX® BACKS
CANADIAN PRICE LIST/ORDER FORM
 Effective July 1, 2022



Date of Order: _____	Ship to Address: _____
Dealer Name: _____	_____
Dealer Account #: _____	City: _____
PO #: _____	Province: _____ Postal Code: _____
Tag: _____	Comments: _____
Purchasing Contact: _____	_____
Phone: _____ Fax: _____	_____

Back Overview

▶ Page

Matrix® Back Size/Fabric Reference Guide 2/3/4

Pediatric Backs

▶ Page

Matrix® Mini Back/Extra Outer Cover 5
 Options and Modifications for MATRIX® Mini Back 6
 Upgrades for MATRIX® Mini Back 6/7
 Hardware for MATRIX® Mini Back 6
 Lateral Options for MATRIX® Mini Back 7

Standard Backs

▶ Page

Matrix® Elite E2 Standard Backs/Extra Outer Cover 8/9
 Protect Infection Control Slip Cover for MATRIX® E2 Standard Back 9
 Matrix® Elite E2 Deep Backs/Extra Outer Cover 10/11
 Protect Infection Control Slipcover for MATRIX® E2 Deep Back 11
 Carbon Fiber Upgrade for Matrix® Elite E2 Standard Back 12
 Lateral Options for Matrix® Elite E2 Standard Back 12
 Accessories for Matrix® Elite E2 Standard and Deep Backs 12/13
 Hardware Options for Matrix® Elite E2 Standard and Deep Backs 13/14/15
 Matrix® PB Back/Extra Outer Cover 16
 Matrix® PB Deep Back/Extra Outer Cover 16
 Matrix® Elite Back/Extra Outer Cover 19/20
 Matrix® Elite Back with SuperSoft Foam/Extra Outer Cover 20
 Matrix® Elite TR Back/Extra Outer Cover 22
 Matrix® Elite Deep Back/Extra Outer Cover 23
 Back Upgrades for ALL MATRIX® Elite Backs 27
 Hardware Upgrades for Matrix Elite and PB Backs 28/29
 Lateral Options for MATRIX® Elite Backs 27
 Matrix® Elite and PB Back Options and Modifications 30/31
 Matrix® MX2 Back/Extra Outer Cover 32
 Hardware Options for MATRIX® MX2 Back 32
 Lateral Options for Matrix® MX2 Back 33

Bariatric Backs

▶ Page

Matrix® PB Heavy-Duty Back/Extra Outer Cover 17
 Matrix® PB Extra Wide Heavy-Duty Back/Extra Outer Cover 17
 Matrix® PB Deep Heavy-Duty Back/Extra Outer Cover 18
 Matrix® PB Extra Wide Deep Heavy-Duty Back/Extra Outer Cover 18
 Matrix® Elite Heavy-Duty Back/Extra Outer Cover 21
 Matrix® Elite Extra Wide Heavy-Duty Back/Extra Outer Cover 21
 Matrix® Elite Deep Heavy-Duty Back/Extra Outer Cover 25
 Matrix® Elite TR Heavy-Duty Back/Extra Outer Cover 25
 Hardware Upgrades for Matrix Elite and PB Backs 27/29

MATRX® BACKS – CANADIAN PRICE LIST/ORDER FORM

MATRX® BACK: (Standard) - Size Reference Guide

Back Size	Matrx Elite Backs					Matrx Posture Backs		Matrx MX2
	E2	E2 Deep	Elite	Elite-TR	Elite Deep	PB	PB Deep	MX2
	Model No.	Model No.	Model No.	Model No.	Model No.	Model No.	Model No.	Model No.
1406	E2S1406	E2D1406						IMX21406
1408	E2S1408	E2D1408						
1409								IMX21409
1410	E2S1410	E2D1410	PBE1410					
1412	E2S1412	E2D1412	PBE1412		EDB1412	MPB1412	PBD1412	IMX21412
1414	E2S1414	E2D1414	PBE1414					
1416	E2S1416	E2D1416	PBE1416		EDB1416	MPB1416	PBD1416	IMX21416
1418	E2S1418	E2D1418	PBE1418		EDB1418			
1420	E2S1420	E2D1420	PBE1420		EDB1420			
1506	E2S1506	E2D1506						
1508	E2S1508	E2D1508						IMX21506
1509								IMX21509
1510	E2S1510	E2D1510	PBE1510		EDB1510			
1512	E2S1512	E2D1512	PBE1512		EDB1512			IMX21512
1514	E2S1514	E2D1514	PBE1514+	PBE1514-TR	EDB1514			
1516	E2S1516	E2D1516	PBE1516	PBE1516-TR	EDB1516			IMX21516
1518	E2S1518	E2D1518	PBE1518	PBE1518-TR	EDB1518			
1520	E2S1520	E2D1520	PBE1520	PBE1520-TR	EDB1520			
1606	E2S1606	E2D1606						
1608	E2S1608	E2D1608						IMX21606
1609								IMX21609
1610	E2S1610	E2D1610	PBE1610		EDB1610			
1612	E2S1612	E2D1612	PBE1612		EDB1612	MPB1612	PBD1612	IMX21612
1614	E2S1614	E2D1614	PBE1614+	PBE1614-TR	EDB1614			
1616	E2S1616	E2D1616	PBE1616*	PBE1616-TR	EDB1616*	MPB1616	PBD1616	IMX21616
1618	E2S1618	E2D1618	PBE1618*	PBE1618-TR	EDB1618*			
1620	E2S1620	E2D1620	PBE1620*	PBE1620-TR	EDB1620*	MPB1620	PBD1620	
1706	E2S1706	E2D1706						
1708	E2S1708	E2D1708						IMX21706
1709								IMX21709
1710	E2S1710	E2D1710	PBE1710		EDB1710			
1712	E2S1712	E2D1712	PBE1712		EDB1712	MPB1712	PBD1712	IMX21712
1714	E2S1714	E2D1714	PBE1714+	PBE1714-TR	EDB1714			
1716	E2S1716	E2D1716	PBE1716	PBE1716-TR	EDB1716	MPB1716	PBD1716	IMX21716
1718	E2S1718	E2D1718	PBE1718	PBE1718-TR	EDB1718			
1720	E2S1720	E2D1720	PBE1720	PBE1720-TR	EDB1720	MPB1720	PBD1720	
1806	E2S1806	E2D1806						IMX21806
1808	E2S1808	E2D1808						
1809								IMX21809
1810	E2S1810	E2D1810	PBE1810		EDB1810			
1812	E2S1812	E2D1812	PBE1812		EDB1812	MPB1812	PBD1812	IMX21812
1814	E2S1814	E2D1814	PBE1814+	PBE1814-TR	EDB1814			
1816	E2S1816	E2D1816	PBE1816*	PBE1816-TR	EDB1816*	MPB1816	PBD1816	IMX21816
1818	E2S1818	E2D1818	PBE1818*	PBE1818-TR	EDB1818*			
1820	E2S1820	E2D1820	PBE1820*	PBE1820-TR	EDB1820*	MPB1820	PBD1820	

More Standard sizes on the next page

Note: *- The Elite and Elite Deep Backs with SuperSoft Foam are Stock Items
 +- SuperSoft Foam NOT available in this size - Order TR instead

MATRX® BACKS – CANADIAN PRICE LIST/ORDER FORM

MATRX® BACK: (Standard) - Size Reference Guide - Continued

	Matrx Elite Backs					Matrx Posture Backs		Matrx MX2
	E2	E2 Deep	Elite	Elite-TR	Elite Deep	PB	PB Deep	MX2
			Model No.	Model No.	Model No.	Model No.	Model No.	Model No.
1906	E2S1906	E2D1906						
1908	E2S1908	E2D1908						
1910	E2S1910	E2D1910	PBE1910		EDB1910			
1912	E2S1912	E2D1912	PBE1912		EDB1912			
1914	E2S1914	E2D1914	PBE1914+	PBE1914-TR	EDB1914			
1916	E2S1916	E2D1916	PBE1916	PBE1916-TR	EDB1916			
1918	E2S1918	E2D1918	PBE1918	PBE1918-TR	EDB1918			
1920	E2S1920	E2D1920	PBE1920	PBE1920-TR	EDB1920			
2006	E2S2006	E2D1906						
2008	E2S2008	E2D2008						
2010	E2S2010	E2D2010	PBE2010		EDB2010			
2012	E2S2012	E2D2012	PBE2012		EDB2012	MPB2012	PBD2012	
2014	E2S2014	E2D2014	PBE2014+	PBE2014-TR	EDB2014			
2016	E2S2016	E2D2016	PBE2016*	PBE2016-TR	EDB2016*	MPB2016	PBD2016	
2018	E2S2018	E2D2018	PBE2018*	PBE2018-TR	EDB2018*			
2020	E2S2020	E2D2020	PBE2020*	PBE2020-TR	EDB2020*	MPB2020	PBD2020	

Note: *- The Elite and Elite Deep Backs with SuperSoft Foam are Stock Items
 +- SuperSoft Foam NOT available in this size - Order TR instead

MATRX® BACK: (Heavy-Duty) - Size Reference Chart

Back Size	Elite Backs			Posture Backs	
	Elite-HD	Elite-TR HD	Elite Deep HD	Heavy Duty PB	PB Deep HD
	Model No.	Model No.	Model No.	Model No.	Model No.
2016				HDB2016	DHD2016
2020				HDB2020	DHD2020
2116	PBE2116-HD		EDB2116-HD		
2118			EDB2118-HD		
2120	PBE2120-HD	PBE2120-TRHD	EDB2120-HD		
2216	PBE2216-HD		EDB2216-HD	HDB2216	DHD2216
2218			EDB2218-HD		
2220	PBE2220-HD	PBE2220-TRHD	EDB2220-HD	HDB2220	DHD2220
2316	PBE2316-HD		EDB2316-HD		
2318			EDB2318-HD		
2320	PBE2320-HD	PBE2320-TRHD	EDB2320-HD		
2416	PBE2416-HD		EDB2416-HD	HDB2416	DHD2416
2418			EDB2418-HD		
2420	PBE2420-HD	PBE2420-TRHD	EDB2420-HD	HDB2420	DHD2420
	PBEww16-HD	n/a	n/a	HDBww16	DHDww16
	PBEww20-HD	n/a	n/a	HDBww20	DHDww20

NOTE: Extra Wide Heavy-Duty Back sizes available for: Widths 25"- 30"

MATRIX® BACKS – CANADIAN PRICE LIST/ORDER FORM

MATRIX® BACK: (Pediatric) - Size Reference Guide

Back Size	MINI	Elite Backs		Posture Backs	
	MINI	Elite	Elite Deep	PB	PB Deep
Model No.	Model No.	Model No.	Model No.	Model No.	Model No.
1007	MINI1007				
1010	MINI1010				
1012	MINI1012				
1014	MINI1014				
1107	MINI1107				
1110	MINI1110				
1112	MINI1112				
1114	MINI1114				
1207	MINI1207				
1210	MINI1210	(PBE1210)*			
1212	MINI1212	(PBE1212)*			
1214	MINI1214	(PBE1214)*			
1216		PBE1216			
1218		PBE1218			
1307	MINI1307				
1310	MINI1310	(PBE1310)*			
1312	MINI1312	(PBE1312)*			
1314	MINI1314	(PBE1314)*			
1316		PBE1316			
1318		PBE1318			
1406					
1407	MINI1407				
1409					
1410	MINI1410	(PBE1410)*			
1412	MINI1412	(PBE1412)*	EDB1412	MPB1412	PBD1412
1414	MINI1414	(PBE1414)*			

*Note: The paediatric-sized Elite backs (as indicated) are being phased out of production and availability is limited
Motion Concepts recommends the corresponding sized Matrx MINI back as a more suitable Paediatric replacement



MATRIX® BACKS – CANADIAN PRICE LIST/ORDER FORM

MATRIX® MINI BACK: Paediatric – Positioning Back

- Mini Set Hardware fits 3/4", 7/8", 1" diameter back canes
- 3" Contour Depth
- Weight capacity up to 150 lbs
- Backs are pre-drilled for headrest attachment
- Extra outer cover includes foam
- Standard Kid*ab*ra Fabric upholstery or no upcharge cover options of Pink Lollipop, Blizzard Blue or Startex
- Cover Fabric Reference on Page 4

Mini Back

▶ ADP #: SE0001213



QUANTITY	MODEL	FITS WIDTH	FITS LENGTH	MSRP
<input type="checkbox"/> QTY ____	MINI1007	10", 11"	7"	\$845.00
<input type="checkbox"/> QTY ____	MINI1010	10", 11"	10"	\$845.00
<input type="checkbox"/> QTY ____	MINI1012	10", 11"	12"	\$845.00
<input type="checkbox"/> QTY ____	MINI1014	10", 11"	14"	\$845.00
<input type="checkbox"/> QTY ____	MINI1107	11", 12"	7"	\$845.00
<input type="checkbox"/> QTY ____	MINI1110	11", 12"	10"	\$845.00
<input type="checkbox"/> QTY ____	MINI1112	11", 12"	12"	\$845.00
<input type="checkbox"/> QTY ____	MINI1114	11", 12"	14"	\$845.00
<input type="checkbox"/> QTY ____	MINI1207	12", 13"	7"	\$845.00
<input type="checkbox"/> QTY ____	MINI1210	12", 13"	10"	\$845.00
<input type="checkbox"/> QTY ____	MINI1212	12", 13"	12"	\$845.00
<input type="checkbox"/> QTY ____	MINI1214	12", 13"	14"	\$845.00
<input type="checkbox"/> QTY ____	MINI1307	13", 14"	7"	\$845.00
<input type="checkbox"/> QTY ____	MINI1310	13", 14"	10"	\$845.00
<input type="checkbox"/> QTY ____	MINI1312	13", 14"	12"	\$845.00
<input type="checkbox"/> QTY ____	MINI1314	13", 14"	14"	\$845.00
<input type="checkbox"/> QTY ____	MINI1407	14", 15"	7"	\$845.00
<input type="checkbox"/> QTY ____	MINI1410	14", 15"	10"	\$845.00
<input type="checkbox"/> QTY ____	MINI1412	14", 15"	12"	\$845.00
<input type="checkbox"/> QTY ____	MINI1414	14", 15"	14"	\$845.00

COVER OPTIONS:

- SPECIFY: MINI-K (Kid*ab*ra) MINI-S (Black Startex)
 MINI-P (Pink Lollipop) MINI-B (Blizzard Blue)

Mini Extra Outer Cover (Comes standard with foam)

▶ ADP #: SEMCF102L



MODEL	COVER OPTION	MSRP
<input type="checkbox"/> MC(wwhh)-S	Startex	\$175.00
<input type="checkbox"/> MC(wwhh)-K	Kid*ab*ra	\$175.00
<input type="checkbox"/> MC(wwhh)-P	Pink Lollipop	\$175.00
<input type="checkbox"/> MC(wwhh)-B	Blizzard Blue	\$175.00

SPECIFY: WIDTH ____ HEIGHT ____ QTY ____

BACK OPTIONS & MODIFICATIONS Available for Pediatric, Matrix Mini Backs

Chest Harness Interface KitS



QUANTITY	MODEL	COMPONENT	MSRP
<input type="checkbox"/> QTY ____	CHIMB	1 piece Back Mount Chest Harness Interface Kit - for Mini Back <i>Chest Harness is not included - mounting kit only</i>	\$95.00
<input type="checkbox"/> QTY ____	HIMINI	2 piece Side Mount Chest Harness Interface Kit - for Mini Back <i>Chest Harness is not included - mounting kit only</i>	\$110.00

MINI EXT



QUANTITY	MODEL	COMPONENT	MSRP
<input type="checkbox"/> QTY ____	MINIEXT	Hardware Extends 3.5" Longer/Lower (pair)	\$80.00

MINIFlex Abdominal Support Band - Available for Matrix Mini Backs 10" w - 14"



QUANTITY	MODEL	COMPONENT	MSRP
<input type="checkbox"/> QTY ____	MINIFLEX-XS	Support Band 4.5" Long	\$245.00
<input type="checkbox"/> QTY ____	MINIFLEX-S	Support Band 6" Long	\$245.00

HARDWARE: Available for Pediatric, Matrix Mini Backs

Options:



	HARDWARE ONLY MODEL #	MSRP
Mini Set Mounting Hardware (pair)- Fits 3/4", 7/8", 1" back canes (Standard on Mini Backs) <i>If sold separately</i>		
<input type="checkbox"/> MSMH		\$295.00
Mini Set Heavy-Duty Mounting Hardware (pair)- Fits 3/4", 7/8", 1" back canes <i>Upgrade at time of order</i>		
<input type="checkbox"/> MSHDU		\$95.00

MATRIX® MINI LATERALS: Available for Matrix Mini Backs

Swing-Away Hardware with Pad* - Available only for Matrix Mini Backs ► ADP #: SEICF202L (Hardware) + SELCF102L (Pad)



QUANTITY	MODEL	DESCRIPTION	MSRP
<input type="checkbox"/> QTY ____	SAHMINI-XS	Swing-Away Lateral Hardware - Universal (each) <i>Extra Small Pad 3.25" Long x 4.25" Long</i>	\$365.00
<input type="checkbox"/> QTY ____	SAHMINI-S	Swing-Away Lateral Hardware - Universal (each) <i>Small Pad: 3.5" Long x 5.25" Long</i>	\$365.00

Mini Fixed Laterals - Fits Matrix Mini backs and 12/13" Matrix Elite backs

► ADP #: SELD0005



QUANTITY	MODEL	DESCRIPTION	MSRP
<input type="checkbox"/> QTY ____	MINILAT	Mini Fixed Lateral - Universal (each) <i>Pad 4.5" Long x 3 " Long</i>	\$130.00

COLOR OPTIONS:

- SPECIFY: MINILAT-K (Kid*ab*ra) MINILAT-S (Black Startex)
 MINILAT-P (Pink Lollipop) MINILAT-B (Blizzard Blue)

BACK UPGRADES Available for Matrix Mini Backs

Personalized Dipped Back Shell (4 week lead time)

(Backs with this modification may not be cancelled or returned after order is placed)

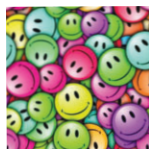


QUANTITY	MODEL	DESCRIPTION	MSRP
<input type="checkbox"/> QTY ____	DBSM	Dipped Back Shell	\$335.00

COLOR OPTIONS:

- SPECIFY: DBSM-13 (SMILEY FACES) DBSM-20 (SPLATTER)
 DBSM-14 (BUTTERFLIES) DBSM-9 (GRAFFITI)
 DBSM-15 (SUGAR SKULLS) DBSM-17 (TRANSFORMERS)
 DBSM-23 (ANIMALS) DBSM-11 (LOONEY TUNES)
 DBSM-7 (PINK CAMO) DBSM-18 (MINECRAFT)
 DBSM-12 (MINIONS) DBSM-22 (ABSTRACT)

Please contact Customer service for additional design options



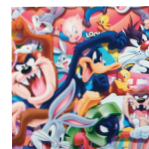
SMILEY FACES



ANIMALS



SPLATTER



LOONEY TUNES



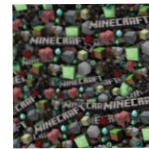
BUTTERFLIES



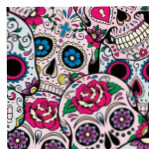
PINK CAMO



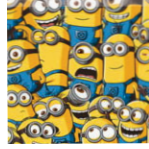
GRAFFITI



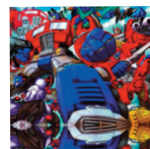
MINECRAFT



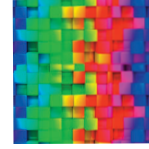
SUGAR SKULLS



MINIONS



TRANSFORMERS



ABSTRACT

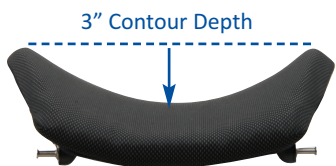
MATRIX® BACKS – CANADIAN PRICE LIST/ORDER FORM

MATRIX® ELITE E2S BACK: Standard 3" Contour

- All E2S backs 6" to 16" long include MiniSet Quick Release Mounting Hardware – fits wheelchairs 1" narrower or 1" wider than back model width; refer to Pages 13-15 for additional Mounting Hardware options
- Hardware fits ¾", 7/8" and 1" diameter back canes
- Standard Meshtex fabric cover
- Lumbar positioning pad included
- Headrest Interface included with backs 14" and longer
- Weight capacity 300 lbs.

Elite E2S Back: Models 6" to 16" Long

▶ ADP #: SE0001775 (6" - 16" long)



MiniSet Quick Release Mounting Hardware



QUANTITY	MODEL	FITS WIDTH	FITS LENGTH	MSRP
<input type="checkbox"/> QTY ___	E2S1406	13" - 15"	06"	\$965.00
<input type="checkbox"/> QTY ___	E2S1408	13" - 15"	08"	\$965.00
<input type="checkbox"/> QTY ___	E2S1410	13" - 15"	10"	\$965.00
<input type="checkbox"/> QTY ___	E2S1412	13" - 15"	12"	\$965.00
<input type="checkbox"/> QTY ___	E2S1414	13" - 15"	14"	\$965.00
<input type="checkbox"/> QTY ___	E2S1416	13" - 15"	16"	\$965.00
<input type="checkbox"/> QTY ___	E2S1506	14" - 16"	06"	\$965.00
<input type="checkbox"/> QTY ___	E2S1508	14" - 16"	08"	\$965.00
<input type="checkbox"/> QTY ___	E2S1510	14" - 16"	10"	\$965.00
<input type="checkbox"/> QTY ___	E2S1512	14" - 16"	12"	\$965.00
<input type="checkbox"/> QTY ___	E2S1514	14" - 16"	14"	\$965.00
<input type="checkbox"/> QTY ___	E2S1516	14" - 16"	16"	\$965.00
<input type="checkbox"/> QTY ___	E2S1606	15" - 17"	06"	\$965.00
<input type="checkbox"/> QTY ___	E2S1608	15" - 17"	08"	\$965.00
<input type="checkbox"/> QTY ___	E2S1610	15" - 17"	10"	\$965.00
<input type="checkbox"/> QTY ___	E2S1612	15" - 17"	12"	\$965.00
<input type="checkbox"/> QTY ___	E2S1614	15" - 17"	14"	\$965.00
<input type="checkbox"/> QTY ___	E2S1616	15" - 17"	16"	\$965.00
<input type="checkbox"/> QTY ___	E2S1706	16" - 18"	06"	\$965.00
<input type="checkbox"/> QTY ___	E2S1708	16" - 18"	08"	\$965.00
<input type="checkbox"/> QTY ___	E2S1710	16" - 18"	10"	\$965.00
<input type="checkbox"/> QTY ___	E2S1712	16" - 18"	12"	\$965.00
<input type="checkbox"/> QTY ___	E2S1714	16" - 18"	14"	\$965.00
<input type="checkbox"/> QTY ___	E2S1716	16" - 18"	16"	\$965.00
<input type="checkbox"/> QTY ___	E2S1806	17" - 19"	06"	\$965.00
<input type="checkbox"/> QTY ___	E2S1808	17" - 19"	08"	\$965.00
<input type="checkbox"/> QTY ___	E2S1810	17" - 19"	10"	\$965.00
<input type="checkbox"/> QTY ___	E2S1812	17" - 19"	12"	\$965.00
<input type="checkbox"/> QTY ___	E2S1814	17" - 19"	14"	\$965.00
<input type="checkbox"/> QTY ___	E2S1816	17" - 19"	16"	\$965.00
<input type="checkbox"/> QTY ___	E2S1906	18" - 20"	06"	\$965.00
<input type="checkbox"/> QTY ___	E2S1908	18" - 20"	08"	\$965.00
<input type="checkbox"/> QTY ___	E2S1910	18" - 20"	10"	\$965.00
<input type="checkbox"/> QTY ___	E2S1912	18" - 20"	12"	\$965.00
<input type="checkbox"/> QTY ___	E2S1914	18" - 20"	14"	\$965.00
<input type="checkbox"/> QTY ___	E2S1916	18" - 20"	16"	\$965.00
<input type="checkbox"/> QTY ___	E2S2006	19" - 21"	06"	\$965.00
<input type="checkbox"/> QTY ___	E2S2008	19" - 21"	08"	\$965.00
<input type="checkbox"/> QTY ___	E2S2010	19" - 21"	10"	\$965.00
<input type="checkbox"/> QTY ___	E2S2012	19" - 21"	12"	\$965.00
<input type="checkbox"/> QTY ___	E2S2014	19" - 21"	14"	\$965.00
<input type="checkbox"/> QTY ___	E2S2016	19" - 21"	16"	\$965.00

More sizes are available on the next page

MATRIX® BACKS – CANADIAN PRICE LIST/ORDER FORM

MATRIX® ELITE E2S BACK: Standard 3" Contour - Continued

- All E2S backs 18" and 20" long include EasySet Quick Release Mounting Hardware – fits wheelchairs 1" narrower or 2" wider than back model width; refer to Pages 13-15 for additional Mounting Hardware options
- Hardware fits ¾", 7/8" and 1" diameter back canes
- Standard Meshtex fabric cover
- Lumbar positioning pad included
- Headrest Interface included with backs 14" and longer
- Weight capacity 300 lbs.

Elite E2S Back: Models 18" and 20 Long

▶ ADP #: SE0001776 (18" & 20" long)



EasySet Quick Release Mounting Hardware

QUANTITY	MODEL	FITS WIDTH	FITS LENGTH	MSRP
<input type="checkbox"/> QTY ____	E2S1418	13"- 16"	18"	\$995.00
<input type="checkbox"/> QTY ____	E2S1420	13"- 16"	20"	\$995.00
<input type="checkbox"/> QTY ____	E2S1518	14"- 17"	18"	\$995.00
<input type="checkbox"/> QTY ____	E2S1520	14"- 17"	20"	\$995.00
<input type="checkbox"/> QTY ____	E2S1618	15"- 18"	18"	\$995.00
<input type="checkbox"/> QTY ____	E2S1620	15"- 18"	20"	\$995.00
<input type="checkbox"/> QTY ____	E2S1718	16"- 19"	18"	\$995.00
<input type="checkbox"/> QTY ____	E2S1720	16"- 19"	20"	\$995.00
<input type="checkbox"/> QTY ____	E2S1818	17"- 20"	18"	\$995.00
<input type="checkbox"/> QTY ____	E2S1820	17"- 20"	20"	\$995.00
<input type="checkbox"/> QTY ____	E2S1918	18"- 21"	18"	\$995.00
<input type="checkbox"/> QTY ____	E2S1920	18"- 21"	20"	\$995.00
<input type="checkbox"/> QTY ____	E2S2018	19"- 22"	18"	\$995.00
<input type="checkbox"/> QTY ____	E2S2020	19"- 22"	20"	\$995.00

Elite E2S Extra Back Cover - Includes Foam (Comes standard with foam)

Refer to back sizes above for proper fit

MODEL	FITS WIDTH	FITS LENGTH	MSRP
E2SC	REFER TO BACK SIZES ABOVE		\$175.00
SPECIFY:	WIDTH ____	HEIGHT ____	<input type="checkbox"/> QTY ____

E2S Protect - Infection Control Slipcover*

Stock sizes available (in Black): *Other sizes are available (in Blue) - 4 week lead time

Infection Control Slipcover if ordered with Back Infection Control Slipcover Only
 PROTE2SU\$95.00 PROTE2S\$125.00



SPECIFY: QTY ____

<input type="checkbox"/> 1406*	<input type="checkbox"/> 1506*	<input type="checkbox"/> 1606*	<input type="checkbox"/> 1706*	<input type="checkbox"/> 1806*	<input type="checkbox"/> 1906*	<input type="checkbox"/> 2006*
<input type="checkbox"/> 1408*	<input type="checkbox"/> 1508*	<input type="checkbox"/> 1608*	<input type="checkbox"/> 1708	<input type="checkbox"/> 1808*	<input type="checkbox"/> 1908*	<input type="checkbox"/> 2008*
<input type="checkbox"/> 1410 *	<input type="checkbox"/> 1510	<input type="checkbox"/> 1610	<input type="checkbox"/> 1710	<input type="checkbox"/> 1810*	<input type="checkbox"/> 1910*	<input type="checkbox"/> 2010*
<input type="checkbox"/> 1412	<input type="checkbox"/> 1512*	<input type="checkbox"/> 1612	<input type="checkbox"/> 1712	<input type="checkbox"/> 1812	<input type="checkbox"/> 1912*	<input type="checkbox"/> 2012*
<input type="checkbox"/> 1414	<input type="checkbox"/> 1514	<input type="checkbox"/> 1614	<input type="checkbox"/> 1714*	<input type="checkbox"/> 1814	<input type="checkbox"/> 1914*	<input type="checkbox"/> 2014
<input type="checkbox"/> 1416	<input type="checkbox"/> 1516	<input type="checkbox"/> 1616	<input type="checkbox"/> 1716	<input type="checkbox"/> 1816	<input type="checkbox"/> 1916	<input type="checkbox"/> 2016
<input type="checkbox"/> 1418*	<input type="checkbox"/> 1518*	<input type="checkbox"/> 1618	<input type="checkbox"/> 1718	<input type="checkbox"/> 1818	<input type="checkbox"/> 1918	<input type="checkbox"/> 2018
<input type="checkbox"/> 1420*	<input type="checkbox"/> 1520	<input type="checkbox"/> 1620	<input type="checkbox"/> 1720	<input type="checkbox"/> 1820	<input type="checkbox"/> 1920	<input type="checkbox"/> 2020

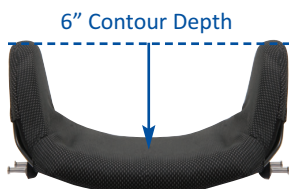
MATRIX® BACKS – CANADIAN PRICE LIST/ORDER FORM

MATRIX® ELITE E2D BACK: Deep 6" Contour

- All E2D backs 6" to 16" long include MiniSet Quick Release Mounting Hardware – fits wheelchairs 1" narrower or 1" wider than back model width; refer to Pages 13-15 for additional Mounting Hardware options
- Hardware fits ¾", 7/8" and 1" diameter back canes
- Standard Meshtex fabric cover
- Lumbar positioning pad included
- Headrest Interface included with backs 14" and longer
- Weight capacity 300 lbs.

Elite E2D Deep Back: Models 6" to 16" Long

► ADP #: SE0001777 (6" - 16" long)



MiniSet Quick Release Mounting Hardware



QUANTITY	MODEL	FITS WIDTH	FITS LENGTH	MSRP
<input type="checkbox"/> QTY ____	E2D1406	13" - 15"	06"	\$1125.00
<input type="checkbox"/> QTY ____	E2D1408	13" - 15"	08"	\$1125.00
<input type="checkbox"/> QTY ____	E2D1410	13" - 15"	10"	\$1125.00
<input type="checkbox"/> QTY ____	E2D1412	13" - 15"	12"	\$1125.00
<input type="checkbox"/> QTY ____	E2D1414	13" - 15"	14"	\$1125.00
<input type="checkbox"/> QTY ____	E2D1416	13" - 15"	16"	\$1125.00
<input type="checkbox"/> QTY ____	E2D1506	14" - 16"	06"	\$1125.00
<input type="checkbox"/> QTY ____	E2D1508	14" - 16"	08"	\$1125.00
<input type="checkbox"/> QTY ____	E2D1510	14" - 16"	10"	\$1125.00
<input type="checkbox"/> QTY ____	E2D1512	14" - 16"	12"	\$1125.00
<input type="checkbox"/> QTY ____	E2D1514	14" - 16"	14"	\$1125.00
<input type="checkbox"/> QTY ____	E2D1516	14" - 16"	16"	\$1125.00
<input type="checkbox"/> QTY ____	E2D1606	15" - 17"	06"	\$1125.00
<input type="checkbox"/> QTY ____	E2D1608	15" - 17"	08"	\$1125.00
<input type="checkbox"/> QTY ____	E2D1610	15" - 17"	10"	\$1125.00
<input type="checkbox"/> QTY ____	E2D1612	15" - 17"	12"	\$1125.00
<input type="checkbox"/> QTY ____	E2D1614	15" - 17"	14"	\$1125.00
<input type="checkbox"/> QTY ____	E2D1616	15" - 17"	16"	\$1125.00
<input type="checkbox"/> QTY ____	E2D1706	16" - 18"	06"	\$1125.00
<input type="checkbox"/> QTY ____	E2D1708	16" - 18"	08"	\$1125.00
<input type="checkbox"/> QTY ____	E2D1710	16" - 18"	10"	\$1125.00
<input type="checkbox"/> QTY ____	E2D1712	16" - 18"	12"	\$1125.00
<input type="checkbox"/> QTY ____	E2D1714	16" - 18"	14"	\$1125.00
<input type="checkbox"/> QTY ____	E2D1716	16" - 18"	16"	\$1125.00
<input type="checkbox"/> QTY ____	E2D1806	17" - 19"	06"	\$1125.00
<input type="checkbox"/> QTY ____	E2D1808	17" - 19"	08"	\$1125.00
<input type="checkbox"/> QTY ____	E2D1810	17" - 19"	10"	\$1125.00
<input type="checkbox"/> QTY ____	E2D1812	17" - 19"	12"	\$1125.00
<input type="checkbox"/> QTY ____	E2D1814	17" - 19"	14"	\$1125.00
<input type="checkbox"/> QTY ____	E2D1816	17" - 19"	16"	\$1125.00
<input type="checkbox"/> QTY ____	E2D1906	18" - 20"	06"	\$1125.00
<input type="checkbox"/> QTY ____	E2D1908	18" - 20"	08"	\$1125.00
<input type="checkbox"/> QTY ____	E2D1910	18" - 20"	10"	\$1125.00
<input type="checkbox"/> QTY ____	E2D1912	18" - 20"	12"	\$1125.00
<input type="checkbox"/> QTY ____	E2D1914	18" - 20"	14"	\$1125.00
<input type="checkbox"/> QTY ____	E2D1916	18" - 20"	16"	\$1125.00
<input type="checkbox"/> QTY ____	E2D2006	19" - 21"	06"	\$1125.00
<input type="checkbox"/> QTY ____	E2D2008	19" - 21"	08"	\$1125.00
<input type="checkbox"/> QTY ____	E2D2010	19" - 21"	10"	\$1125.00
<input type="checkbox"/> QTY ____	E2D2012	19" - 21"	12"	\$1125.00
<input type="checkbox"/> QTY ____	E2D2014	19" - 21"	14"	\$1125.00
<input type="checkbox"/> QTY ____	E2D2016	19" - 21"	16"	\$1125.00

More sizes are available on the next page

MATRIX® BACKS – CANADIAN PRICE LIST/ORDER FORM

MATRIX® ELITE E2D BACK: Deep 6" Contour - Continued

- All E2D backs 18" and 20" long include EasySet Quick Release Mounting Hardware – fits wheelchairs 1" narrower or 2" wider than back model width; refer to Pages 13-15 for additional Mounting Hardware options
- Hardware fits ¾", 7/8" and 1" diameter back canes
- Standard Meshtex fabric cover
- Lumbar positioning pad included
- Headrest Interface included with backs 14" and longer
- Weight capacity 300 lbs.

Elite E2D Deep Back: Models 18" and 20 Long

▶ ADP #: SE0001778 (18" & 20" long)



EasySet Quick Release Mounting Hardware

QUANTITY	MODEL	FITS WIDTH	FITS LENGTH	MSRP
<input type="checkbox"/> QTY ____	E2D1418	13"- 16"	18"	\$1155.00
<input type="checkbox"/> QTY ____	E2D1420	13"- 16"	20"	\$1155.00
<input type="checkbox"/> QTY ____	E2D1518	14"- 17"	18"	\$1155.00
<input type="checkbox"/> QTY ____	E2D1520	14"- 17"	20"	\$1155.00
<input type="checkbox"/> QTY ____	E2D1618	15"- 18"	18"	\$1155.00
<input type="checkbox"/> QTY ____	E2D1620	15"- 18"	20"	\$1155.00
<input type="checkbox"/> QTY ____	E2D1718	16"- 19"	18"	\$1155.00
<input type="checkbox"/> QTY ____	E2D1720	16"- 19"	20"	\$1155.00
<input type="checkbox"/> QTY ____	E2D1818	17"- 20"	18"	\$1155.00
<input type="checkbox"/> QTY ____	E2D1820	17"- 20"	20"	\$1155.00
<input type="checkbox"/> QTY ____	E2D1918	18"- 21"	18"	\$1155.00
<input type="checkbox"/> QTY ____	E2D1920	18"- 21"	20"	\$1155.00
<input type="checkbox"/> QTY ____	E2D2018	19"- 22"	18"	\$1155.00
<input type="checkbox"/> QTY ____	E2D2020	19"- 22"	20"	\$1155.00

Elite E2D Deep Extra Back Cover (Comes standard with foam)

Refer to back sizes above for proper fit

MODEL	FITS WIDTH	FITS LENGTH	MSRP
E2DC	REFER TO BACK SIZES ABOVE		\$195.00

SPECIFY: WIDTH ____ HEIGHT ____ QTY ____

E2S Protect - Infection Control Slipcover*

Stock sizes available (in Black): *Other sizes are available (in Blue) - 4 week lead time

Infection Control Slipcover if ordered with Back

Infection Control Slipcover Only

PROTE2DU.....\$95.00

PROTE2D.....\$125.00



SPECIFY: QTY ____

<input type="checkbox"/> 1406*	<input type="checkbox"/> 1506*	<input type="checkbox"/> 1606*	<input type="checkbox"/> 1706*	<input type="checkbox"/> 1806*	<input type="checkbox"/> 1906*	<input type="checkbox"/> 2006*
<input type="checkbox"/> 1408*	<input type="checkbox"/> 1508*	<input type="checkbox"/> 1608*	<input type="checkbox"/> 1708	<input type="checkbox"/> 1808*	<input type="checkbox"/> 1908*	<input type="checkbox"/> 2008*
<input type="checkbox"/> 1410 *	<input type="checkbox"/> 1510	<input type="checkbox"/> 1610	<input type="checkbox"/> 1710	<input type="checkbox"/> 1810*	<input type="checkbox"/> 1910*	<input type="checkbox"/> 2010*
<input type="checkbox"/> 1412	<input type="checkbox"/> 1512*	<input type="checkbox"/> 1612	<input type="checkbox"/> 1712	<input type="checkbox"/> 1812	<input type="checkbox"/> 1912*	<input type="checkbox"/> 2012*
<input type="checkbox"/> 1414	<input type="checkbox"/> 1514	<input type="checkbox"/> 1614	<input type="checkbox"/> 1714*	<input type="checkbox"/> 1814	<input type="checkbox"/> 1914*	<input type="checkbox"/> 2014
<input type="checkbox"/> 1416	<input type="checkbox"/> 1516	<input type="checkbox"/> 1616	<input type="checkbox"/> 1716	<input type="checkbox"/> 1816	<input type="checkbox"/> 1916	<input type="checkbox"/> 2016
<input type="checkbox"/> 1418*	<input type="checkbox"/> 1518*	<input type="checkbox"/> 1618	<input type="checkbox"/> 1718	<input type="checkbox"/> 1818	<input type="checkbox"/> 1918	<input type="checkbox"/> 2018
<input type="checkbox"/> 1420*	<input type="checkbox"/> 1520	<input type="checkbox"/> 1620	<input type="checkbox"/> 1720	<input type="checkbox"/> 1820	<input type="checkbox"/> 1920	<input type="checkbox"/> 2020

ELITE E2 LATERALS

E2 Fixed Laterals - Can be installed inside or Outside of the Back Shell

▶ ADP #: SELD0005

Compatible with E2 Standard Contour back heights 10" and longer. Height adjustable in vertical slot, can be installed on inside or outside of back shell.



QUANTITY	MODEL	DESCRIPTION	MSRP
<input type="checkbox"/> QTY___	E2FL	Fixed Laterals (pair) Height 6.5", depth 5"	\$385.00

Swing-Away Hardware - Available on E2 Backs from 10" long

▶ ADP #: SEICF202L (Hardware) + SELCF102L (Pad)



QUANTITY	MODEL	DESCRIPTION	MSRP
<input type="checkbox"/> QTY___	SALEB-XS-L	Swing-Away Lateral Hardware with XS Pad-Left or Right (each)	\$365.00
<input type="checkbox"/> QTY___	SALEB-XS-R	Pad 3.25" Long x 4.25" Long	
<input type="checkbox"/> QTY___	SALEB-S-L	Swing-Away Lateral Hardware with S Pad-Left or Right (each)	\$365.00
<input type="checkbox"/> QTY___	SALEB-S-R	Pad 3.5" Long x 5.25" Long	
<input type="checkbox"/> QTY___	SALEB-M-L	Swing-Away Lateral Hardware with M Pad-Left or Right (each)	\$365.00
<input type="checkbox"/> QTY___	SALEB-M-R	Pad 3.75" Long x 5.75" Long	
<input type="checkbox"/> QTY___	SALEB-L-L	Swing-Away Lateral Hardware with L Pad-Left or Right (each)	\$365.00
<input type="checkbox"/> QTY___	SALEB-L-R	Pad 4.25" Long x 6.5" Long	

Offset, Swing-Away Hardware* - Available on E2 Backs from 12" long

▶ ADP #: SEICF202L (Hardware) + SELCF102L (Pad)

Allows 3" variance (longer or lower) pad position relative to attachment slot.



QUANTITY	MODEL	DESCRIPTION	MSRP
<input type="checkbox"/> QTY___	OSALEB-XS-L	Offset, Swing-Away Lateral Hardware with	\$365.00
<input type="checkbox"/> QTY___	OSALEB-XS-R	XS Pad-Left or Right (each)	
<input type="checkbox"/> QTY___		Pad 3.25" Long x 4.25" Long	
<input type="checkbox"/> QTY___	OSALEB-S-L	Offset, Swing-Away Lateral Hardware with	\$365.00
<input type="checkbox"/> QTY___	OSALEB-S-R	S Pad-Left or Right (each)	
		Pad 3.5" Long x 5.25" Long	
<input type="checkbox"/> QTY___	OSALEB-M-L	Offset, Swing-Away Lateral Hardware with	\$365.00
<input type="checkbox"/> QTY___	OSALEB-M-R	M Pad-Left or Right (each)	
		Pad 3.75" Long x 5.75" Long	
<input type="checkbox"/> QTY___	OSALEB-L-L	Offset, Swing-Away Lateral Hardware with	\$365.00
<input type="checkbox"/> QTY___	OSALEB-L-R	L Pad-Left or Right (each)	
		Pad 4.25" Long x 6.5" Long	

BACK OPTIONS

E2 Headrest Interface (Included with all E2 backs 14" Height and longer)



QUANTITY	MODEL	DESCRIPTION	MSRP
<input type="checkbox"/> QTY___	E2HI	Molded lightweight, low profile mounting plate for headrest attachment; compatible and tested for Matrix headrest attachment	\$20.00
<input type="checkbox"/> QTY___	E2HDI	Extra strong steel headrest mount for extreme tone or heavy use applications; Recommended for use with non Matrix headrests	\$25.00

E2 Chest Harness Interface (Allows precise placement of Shoulder Strap Guides)



QUANTITY	MODEL	DESCRIPTION	MSRP
<input type="checkbox"/> QTY___	E2CHI-S	Fits E2 backs 14/15" wide	\$85.00
<input type="checkbox"/> QTY___	E2CHI-M	Fits E2 backs 16-20" wide	\$85.00

BACK OPTIONS - Continued

E2 BackBone PSIS Support

Can be trimmed to desired size



QUANTITY	MODEL	DESCRIPTION	MSRP
<input type="checkbox"/> QTY ____	E2BKB	Contoured anatomical PSIS/Sacrolumbar Support	\$75.00

PostureFlex Abdominal Support



QUANTITY	MODEL	DESCRIPTION	MSRP
<input type="checkbox"/> QTY ____	PFLEX-M	Height 6.5", length 16" to 24"	\$295.00
<input type="checkbox"/> QTY ____	PFLEX-L	Height 7", length 20" - 34"	\$295.00
<input type="checkbox"/> QTY ____	QRTAB	Quad release tab for easy independent application and removal of PostureFlex	\$35.00

Privacy Flaps



QUANTITY	MODEL	COMPONENT	MSRP
<input type="checkbox"/> QTY ____	PFLAP-XS	X-Small Privacy Flap <i>10" W x 16" H - fits 14" wide backs</i>	\$60.00
<input type="checkbox"/> QTY ____	PFLAP-S	Small Privacy Flap <i>13" W x 16" H - fits 15"-16" wide backs</i>	\$60.00
<input type="checkbox"/> QTY ____	PFLAP-M	Medium Privacy Flap <i>15" W- 16" H - fits 17"-18" wide backs</i>	\$60.00
<input type="checkbox"/> QTY ____	PFLAP-L	Large Privacy Flap <i>17"W - 16" H - fits 19"-20" wide backs</i>	\$60.00

STANDARD HARDWARE: Available for Elite E2/E2D Backs

Mounting Pin Interface

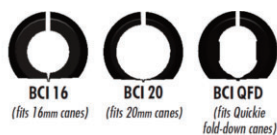


QUANTITY	MODEL	DESCRIPTION	MSRP
<input type="checkbox"/> QTY ____	E2MSMP	MiniSet Mounting Pin Interface Standard on E2/E2D Backs up to 16" Long	\$165.00



<input type="checkbox"/> QTY ____	E2ESMP	EasySet Mounting Pin Interface Standard on E2/E2D Backs 18" and 20" Long	\$180.00
-----------------------------------	--------	--	----------

Back Cane Inserts



Back cane inserts to be used with EasySet and MiniSet Mounting Hardware	
For 16mm back canes (pair)	For 20mm back canes (pair)
<input type="checkbox"/> BCI16\$5.00	<input type="checkbox"/> BCI20\$5.00
For Quickie fold down back canes (pair)	
<input type="checkbox"/> BCIQFD\$5.00	

All hardware options for Elite E2/E2D Backs are available on the next page

E2S/E2D HARDWARE OPTIONS

QUICK RELEASE MOUNTING HARDWARE – Quick release, allows easy removal of back for portability

MiniSet Standard: Included with models 6" to 16" long, fits chairs 1" narrower or 1" wider than back model width



If sold separately
 E2MMH\$295.00

EasySet Standard: Included with models 18" and 20" long, compatible with 12" - 16" long, fits chairs 1" narrower and up to 2" wider than back model width



Fits 3/4", 7/8", 1" back canes
 Substitution at time of order
 E2EMHUN/C

Fits 1 1/8" back canes
 Substitution at time of order
 PBMH-QUN/C

Fits 1 1/4" back canes
 Substitution at time of order
 PBMH-XUN/C



Fits 3/4", 7/8", 1" back canes
 If sold separately
 E2EMH\$295.00

Fits 1 1/8" back canes
 If sold separately
 E2PBMH-Q\$291.00

Fits 1 1/4" back canes
 If sold separately
 E2PBMH-X\$291.00

HEAVY DUTY MOUNTING HARDWARE – Recommended for extreme tone or heavy use applications. Quick release, allows easy removal of back for portability

MiniSet Heavy-Duty: Compatible with back heights 6" to 16" long, fits chairs 1" narrower or 1" wider than back model width



Upgrade at time of order
 MSHDU\$95.00



If sold separately
 E2MSHD\$413.00

EasySet Heavy-Duty: Compatible with back heights 18" to 20" long, fits chairs 1" narrower or 2" wider than back model width



Upgrade at time of order
 HDMHU\$95.00



If sold separately
 E2HDMH\$413.00

Split: Compatible with Easy Set Mounting pins on back heights 12" and longer. Quick release, allows avoidance of frame obstacles



Upgrade at time of order
 E2SMHU (For 12"-16" Long) . . . \$75.00
 SMHU (For 18"-20" Long) \$75.00

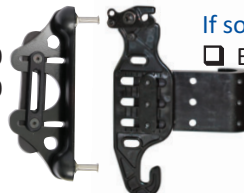


If sold separately
 E2SMH\$291.00

Extended Range Mounting Hardware: Compatible with back heights 12" to 20" long, Provides additional 2" Depth Adjustment



Upgrade at time of order
 E2ERMHU(For 12"-16" long) \$122.00
 ERMHU(For 18"-20" long) . . . \$122.00



If sold separately
 E2ERMH\$341.00

E2S/E2D HARDWARE OPTIONS

FIXED MOUNTING HARDWARE –

Permanent mount requires tools for removal, recommended for tilt recline applications

MiniSet Fixed : Compatible with back heights 6" to 16" long, fits chairs 1" narrower or 1" wider than back model width



Upgrade at time of order
 MSFXU\$60.00



If sold separately
 MSFX\$291.00

EasySet Fixed : Compatible with back heights 12" to 20" long, fits chairs 1" narrower or 2" wider than back model width



Upgrade at time of order
 ESFXU\$60.00



If sold separately
 ESFX\$291.00

MATRIX® BACKS – CANADIAN PRICE LIST/ORDER FORM

MATRIX® PB BACK: Standard – Positioning Back

- Easy Set Hardware fits ¾", 7/8", 1" diameter back canes
- See Page 28 -29 for other hardware options
- 5" Contour Depth
- Weight capacity up to 300 lbs
- Backs include reinforcement plate for headrest
- Mounting Pins allow PB Back to fit 1" narrower/wider than back model. Standard/Long Mounting Pins are included with each back
- Standard Meshtex Fabric upholstery - Cover Fabric Reference on Page 4

PB Back

▶ ADP #: SEB1M0005



QUANTITY	MODEL	FITS WIDTH	FITS LENGTH	MSRP
<input type="checkbox"/> QTY ___	MPB1412	13"-15"	12"	\$734.00
<input type="checkbox"/> QTY ___	MPB1416	13"-15"	16"	\$734.00
<input type="checkbox"/> QTY ___	MPB1612	15"-17"	12"	\$734.00
<input type="checkbox"/> QTY ___	MPB1616	15"-17"	16"	\$734.00
<input type="checkbox"/> QTY ___	MPB1620	15"-17"	20"	\$734.00
<input type="checkbox"/> QTY ___	MPB1712	16"-18"	12"	\$734.00
<input type="checkbox"/> QTY ___	MPB1716	16"-18"	16"	\$734.00
<input type="checkbox"/> QTY ___	MPB1720	16"-18"	20"	\$734.00
<input type="checkbox"/> QTY ___	MPB1812	17"-19"	12"	\$734.00
<input type="checkbox"/> QTY ___	MPB1816	17"-19"	16"	\$734.00
<input type="checkbox"/> QTY ___	MPB1820	17"-19"	20"	\$734.00
<input type="checkbox"/> QTY ___	MPB2012	19"-21"	12"	\$734.00
<input type="checkbox"/> QTY ___	MPB2016	19"-21"	16"	\$734.00
<input type="checkbox"/> QTY ___	MPB2020	19"-21"	20"	\$734.00

PB Extra Outer Cover

▶ ADP #: SEMCF102L

MODEL	COVER OPTION	MSRP
<input type="checkbox"/> PBC(wwhh)	Meshtex	\$121.00

SPECIFY: WIDTH ___ HEIGHT ___ QTY ___

MATRIX® PB DEEP BACK: Standard – Positioning Back

- 7" Contour Depth
- Standard Meshtex Fabric upholstery

PB Deep Back

▶ ADP #: SEB1M0015



QUANTITY	MODEL	FITS WIDTH	FITS LENGTH	MSRP
<input type="checkbox"/> QTY ___	PBD1412	13"-15"	12"	\$892.00
<input type="checkbox"/> QTY ___	PBD1416	13"-15"	16"	\$892.00
<input type="checkbox"/> QTY ___	PBD1612	15"-17"	12"	\$892.00
<input type="checkbox"/> QTY ___	PBD1616	15"-17"	16"	\$892.00
<input type="checkbox"/> QTY ___	PBD1620	15"-17"	20"	\$892.00
<input type="checkbox"/> QTY ___	PBD1712	16"-18"	12"	\$892.00
<input type="checkbox"/> QTY ___	PBD1716	16"-18"	16"	\$892.00
<input type="checkbox"/> QTY ___	PBD1720	16"-18"	20"	\$892.00
<input type="checkbox"/> QTY ___	PBD1812	17"-19"	12"	\$892.00
<input type="checkbox"/> QTY ___	PBD1816	17"-19"	16"	\$892.00
<input type="checkbox"/> QTY ___	PBD1820	17"-19"	20"	\$892.00
<input type="checkbox"/> QTY ___	PBD2012	19"-21"	12"	\$892.00
<input type="checkbox"/> QTY ___	PBD2016	19"-21"	16"	\$892.00
<input type="checkbox"/> QTY ___	PBD2020	19"-21"	20"	\$892.00

PB Deep Extra Outer Cover

▶ ADP #: SEMCF102L

MODEL	COVER OPTION	MSRP
<input type="checkbox"/> DMC(wwhh)	Meshtex	\$133.00

SPECIFY: WIDTH ___ HEIGHT ___ QTY ___

MATRIX® PB HEAVY-DUTY BACK: Bariatric – Positioning Back

- Heavy-Duty Easy Set Hardware fits ¾", 7/8", 1" diameter back canes
- See Page 28 -29 for other hardware options
- 5" Contour Depth
- Weight capacity up to 500 lbs
- Backs include reinforcement plate for headrest
- Mounting Pins allow PB HD Back to fit 1" narrower/wider than back model. Standard/Long Mounting Pins are included with each back
- Standard Meshtex Fabric upholstery - Cover Fabric Reference on Page 4

PB Heavy-Duty Back

▶ ADP #: SEB1M0010



QUANTITY	MODEL	FITS WIDTH	FITS LENGTH	MSRP
<input type="checkbox"/> QTY ____	HDB2016	20",21"	16"	\$1,051.00
<input type="checkbox"/> QTY ____	HDB2020	20"-21"	20"	\$1,051.00
<input type="checkbox"/> QTY ____	HDB2216	22", 23"	16"	\$1,051.00
<input type="checkbox"/> QTY ____	HDB2220	22", 23"	20"	\$1,051.00
<input type="checkbox"/> QTY ____	HDB2416	24", 25"	16"	\$1,051.00
<input type="checkbox"/> QTY ____	HDB2420	24", 25"	20"	\$1,051.00

PB Heavy-Duty Extra Outer Back Cover

▶ ADP #: SEMCF102L

MODEL	COVER OPTION	MSRP
<input type="checkbox"/> HDC(wwhh)	Meshtex	\$121.00

SPECIFY: WIDTH____ HEIGHT____ QTY____

PB Extra Wide Heavy-Duty Back

▶ ADP #: SEB1M0035



MODEL	FITS WIDTH	FITS LENGTH	MSRP
HDBWW16	REFERENCE CHART BELOW		\$1,685.00
SPECIFY:	WIDTH____	<input type="checkbox"/> QTY____	
HDBWW20	REFERENCE CHART BELOW		\$1,685.00
SPECIFY:	WIDTH____	<input type="checkbox"/> QTY____	

		W I D T H (WW)					
		25"	26"	27"	28"	29"	30"
HEIGHT	16"	x	S	x	S	x	S
	20"	x	S	x	S	x	S

<input type="checkbox"/> S	Stock Item
<input type="checkbox"/> x	NON Stock Item - Additional Lead time

PB Extra Wide Heavy-Duty Extra Outer Back Cover (Additional lead time)*

▶ ADP #: SEMCF104L

MODEL	COVER OPTION	MSRP
<input type="checkbox"/> HDC(ww16)	Meshtex	\$227.00
<input type="checkbox"/> HDC(ww20)	Meshtex	\$227.00

SPECIFY: WIDTH____ HEIGHT____ QTY____

* Made to order and non-refundable

MATRX® BACKS – CANADIAN PRICE LIST/ORDER FORM

MATRX® PB DEEP HEAVY-DUTY BACK: Bariatric – Positioning Back

- Heavy-Duty Easy Set Hardware fits ¾", 7/8", 1" diameter back canes
- See Page 28 -29 for other hardware options
- 7" Contour Depth
- Weight capacity up to 500 lbs
- Backs include reinforcement plate for headrest
- Mounting Pins allow PB HD Back to fit 1" narrower/wider than back model. Standard/Long Mounting Pins are included with each back
- Standard Meshtex Fabric upholstery - Cover Fabric Reference on Page 4

PB Deep Heavy-Duty Back

▶ ADP #: SEB1M0020



QUANTITY	MODEL	FITS WIDTH	FITS LENGTH	MSRP
<input type="checkbox"/> QTY ____	DHD2016	20", 21"	16"	\$1,209.00
<input type="checkbox"/> QTY ____	DHD2020	20"-21"	20"	\$1,209.00
<input type="checkbox"/> QTY ____	DHD2216	22", 23"	16"	\$1,209.00
<input type="checkbox"/> QTY ____	DHD2220	22", 23"	20"	\$1,209.00
<input type="checkbox"/> QTY ____	DHD2416	24", 25"	16"	\$1,209.00
<input type="checkbox"/> QTY ____	DHD2420	24", 25"	20"	\$1,209.00

PB Deep Heavy-Duty Extra Outer Back Cover

▶ ADP #: SEMCF102L

MODEL	COVER OPTION	MSRP
<input type="checkbox"/> DDC(wwhh)	Meshtex	\$133.00

SPECIFY: WIDTH ____ HEIGHT ____ QTY ____

PB Extra Wide Deep Heavy-Duty Back

▶ ADP #: SEB1M0040



MODEL	FITS WIDTH	FITS LENGTH	MSRP
DHDXW16	REFERENCE CHART BELOW		\$1,842.00
SPECIFY:	WIDTH ____	<input type="checkbox"/> QTY ____	
DHDXW20	REFERENCE CHART BELOW		\$1,842.00
SPECIFY:	WIDTH ____	<input type="checkbox"/> QTY ____	

W I D T H (WW)	
HEIGHT	25" 26" 27" 28" 29" 30"
16"	x S x S x S
20"	x S x S x S

<input type="checkbox"/> S	Stock Item
<input type="checkbox"/> x	NON Stock Item - Additional Lead time

PB Extra Wide Deep Heavy-Duty Extra Outer Back Cover (Additional lead time)*

▶ ADP #: SEMCF104L

MODEL	COVER OPTION	MSRP
<input type="checkbox"/> DDCXW(ww16)	Meshtex	\$238.00
<input type="checkbox"/> DDCXW(ww20)	Meshtex	\$238.00

SPECIFY: WIDTH ____ HEIGHT ____ QTY ____

* Made to order and non-refundable

MATRIX® BACKS – CANADIAN PRICE LIST/ORDER FORM

MATRIX® ELITE BACK: Standard – Positioning Back

- Easy Set Hardware fits ¾", 7/8", 1" diameter back canes
- See Page 28 -29 for other hardware options
- 3" Contour Depth
- Weight capacity up to 300 lbs
- All Elite Backs 14" and wider x 14" and longer are pre-drilled for headrest attachment, and include headrest adapter plate
- Mounting Pins allow Elite Back to fit 1" narrower/wider than back model. Standard/Long Mounting Pins are included with each back
- Standard Meshtex Fabric upholstery - Cover Fabric Reference on Page 4

Elite Back

► ADP #: SEB1M0025



QUANTITY	MODEL	FITS WIDTH	FITS LENGTH	MSRP
<input type="checkbox"/> QTY ___	PBE1210*+	12"-13"	10"	\$766.00
<input type="checkbox"/> QTY ___	PBE1212*+	12"-13"	12"	\$766.00
<input type="checkbox"/> QTY ___	PBE1214*+	12"-13"	14"	\$766.00
<input type="checkbox"/> QTY ___	PBE1216+	12"-13"	16"	\$766.00
<input type="checkbox"/> QTY ___	PBE1218+	12"-13"	18"	\$766.00
<input type="checkbox"/> QTY ___	PBE1310*+	13"-14"	10"	\$766.00
<input type="checkbox"/> QTY ___	PBE1312*+	13"-14"	12"	\$766.00
<input type="checkbox"/> QTY ___	PBE1314*+	13"-14"	14"	\$766.00
<input type="checkbox"/> QTY ___	PBE1316+	13"-14"	16"	\$766.00
<input type="checkbox"/> QTY ___	PBE1318+	13"-14"	18"	\$766.00
<input type="checkbox"/> QTY ___	PBE1410*	14"-15"	10"	\$766.00
<input type="checkbox"/> QTY ___	PBE1412*	14"-15"	12"	\$766.00
<input type="checkbox"/> QTY ___	PBE1414*	14"-15"	14"	\$766.00
<i>*Note: The pediatric-sized Elite backs are being phased out of production and availability is limited</i>				
<i>+ Elite Fixed Laterals are not available on 12" and 13" Wide Elite backs, please select Mini Fixed Laterals</i>				
<input type="checkbox"/> QTY ___	PBE1416	14"-15"	16"	\$766.00
<input type="checkbox"/> QTY ___	PBE1418	14"-15"	18"	\$766.00
<input type="checkbox"/> QTY ___	PBE1420	14"-15"	20"	\$766.00
<input type="checkbox"/> QTY ___	PBE1510	15"-16"	10"	\$766.00
<input type="checkbox"/> QTY ___	PBE1512	15"-16"	12"	\$766.00
<input type="checkbox"/> QTY ___	PBE1514*	15"-16"	14"	\$766.00
<input type="checkbox"/> QTY ___	PBE1516	15"-16"	16"	\$766.00
<input type="checkbox"/> QTY ___	PBE1518	15"-16"	18"	\$766.00
<input type="checkbox"/> QTY ___	PBE1520	15"-16"	20"	\$766.00
<input type="checkbox"/> QTY ___	PBE1610	16"-17"	10"	\$766.00
<input type="checkbox"/> QTY ___	PBE1612	16"-17"	12"	\$766.00
<input type="checkbox"/> QTY ___	PBE1614*	16"-17"	14"	\$766.00
<input type="checkbox"/> QTY ___	PBE1616	16"-17"	16"	\$766.00
<input type="checkbox"/> QTY ___	PBE1618	16"-17"	18"	\$766.00
<input type="checkbox"/> QTY ___	PBE1620	16"-17"	20"	\$766.00
<input type="checkbox"/> QTY ___	PBE1710	17"-18"	10"	\$766.00
<input type="checkbox"/> QTY ___	PBE1712	17"-18"	12"	\$766.00
<input type="checkbox"/> QTY ___	PBE1714*	17"-18"	14"	\$766.00
<input type="checkbox"/> QTY ___	PBE1716	17"-18"	16"	\$766.00
<input type="checkbox"/> QTY ___	PBE1718	17"-18"	18"	\$766.00
<input type="checkbox"/> QTY ___	PBE1720	17"-18"	20"	\$766.00
<input type="checkbox"/> QTY ___	PBE1810	18"-19"	10"	\$766.00
<input type="checkbox"/> QTY ___	PBE1812	18"-19"	12"	\$766.00
<input type="checkbox"/> QTY ___	PBE1814*	18"-19"	14"	\$766.00
<input type="checkbox"/> QTY ___	PBE1816	18"-19"	16"	\$766.00
<input type="checkbox"/> QTY ___	PBE1818	18"-19"	18"	\$766.00
<input type="checkbox"/> QTY ___	PBE1820	18"-19"	20"	\$766.00

**SuperSoft Foam Modification (EBSS) is not Available on 14" Long Elite Backs - Must order Elite-TR (PBE-TR)*

More sizes are available on the next page

MATRX® BACKS – CANADIAN PRICE LIST/ORDER FORM

MATRX® ELITE BACK: Standard – Positioning Back

- Easy Set Hardware fits ¾", 7/8", 1" diameter back canes
- See Page 28 -29 for other hardware options
- 3" Contour Depth
- Weight capacity up to 300 lbs
- All Elite Backs 14" and wider x 14" and longer are pre-drilled for headrest attachment, and include headrest adapter plate
- Mounting Pins allow Elite Back to fit 1" narrower/wider than back model. Standard/Long Mounting Pins are included with each back
- Standard Meshtex Fabric upholstery - Cover Fabric Reference on Page 4

Elite Back *Continues*

▶ ADP #: SEB1M0025



QUANTITY	MODEL	FITS WIDTH	FITS LENGTH	MSRP
<input type="checkbox"/> QTY ____	PBE1910	19"-20"	10"	\$766.00
<input type="checkbox"/> QTY ____	PBE1912	19"-20"	12"	\$766.00
<input type="checkbox"/> QTY ____	PBE1914*	19"-20"	14"	\$766.00
<input type="checkbox"/> QTY ____	PBE1916	19"-20"	16"	\$766.00
<input type="checkbox"/> QTY ____	PBE1918	19"-20"	18"	\$766.00
<input type="checkbox"/> QTY ____	PBE1920	19"-20"	20"	\$766.00
<input type="checkbox"/> QTY ____	PBE2010	20"-21"	10"	\$766.00
<input type="checkbox"/> QTY ____	PBE2012	20"-21"	12"	\$766.00
<input type="checkbox"/> QTY ____	PBE2014*	20"-21"	14"	\$766.00
<input type="checkbox"/> QTY ____	PBE2016	20"-21"	16"	\$766.00
<input type="checkbox"/> QTY ____	PBE2018	20"-21"	18"	\$766.00
<input type="checkbox"/> QTY ____	PBE2020	20"-21"	20"	\$766.00

*SuperSoft Foam Modification (EBSS) is not Available on 14" Long Elite Backs - Must order Elite-TR (PBE-TR)

Elite Extra Back Cover (Refer to back sizes for proper fit)

▶ ADP #: SEMCF102L

MODEL	COVER OPTION	MSRP
<input type="checkbox"/> PBEC(wwhh)	Meshtex	\$175.00

SPECIFY: WIDTH ____ HEIGHT ____ QTY ____

MATRX® ELITE BACK (With SuperSoft Foam): Standard – Positioning Back

- SuperSoft Foam - 1" soft over 1" firm HR foam
- Standard Meshtex Fabric upholstery - Cover Fabric Reference on Page 4

Elite Back with SuperSoft Foam

▶ ADP #: SEB1M0025 + SEBND0020 (Additional pressure relief)



QUANTITY	MODEL	FITS WIDTH	FITS LENGTH	MSRP
<input type="checkbox"/> QTY ____	PBE1616-EBSS	16"-17"	16"	\$869.00
<input type="checkbox"/> QTY ____	PBE1618-EBSS	16"-17"	18"	\$869.00
<input type="checkbox"/> QTY ____	PBE1620-EBSS	16"-17"	20"	\$869.00
<input type="checkbox"/> QTY ____	PBE1816-EBSS	18"-19"	16"	\$869.00
<input type="checkbox"/> QTY ____	PBE1818-EBSS	18"-19"	18"	\$869.00
<input type="checkbox"/> QTY ____	PBE1820-EBSS	18"-19"	20"	\$869.00
<input type="checkbox"/> QTY ____	PBE2016-EBSS	20"-21"	16"	\$869.00
<input type="checkbox"/> QTY ____	PBE2018-EBSS	20"-21"	18"	\$869.00
<input type="checkbox"/> QTY ____	PBE2020-EBSS	20"-21"	20"	\$869.00

Elite with SuperSoft Foam Extra Back Cover (Refer to back sizes for proper fit)

▶ ADP #: SEMCF102L

MODEL	COVER OPTION	MSRP
<input type="checkbox"/> PBEC(wwhh)-EBSS	Meshtex	\$278.00

SPECIFY: WIDTH ____ HEIGHT ____ QTY ____

MATRX® ELITE HEAVY-DUTY BACK: Bariatric – Positioning Back

- Heavy-Duty Easy Set Hardware fits ¾", 7/8", 1" diameter back canes
- See Page 28 -29 for other hardware options
- 3" Contour Depth
- Weight capacity up to 500 lbs
- Pre-drilled for headrest attachment, includes headrest adapter plate
- Mounting Pins allow Elite HD Back to fit 1" narrower/wider than back model. Standard/Long Mounting Pins are included with each back
- Standard Meshtex Fabric upholstery - Cover Fabric Reference on Page 4

Elite Heavy-Duty Back

▶ ADP #: SE0001051



QUANTITY	MODEL	FITS WIDTH	FITS LENGTH	MSRP
<input type="checkbox"/> QTY ____	PBE2116-HD	20" - 21"	16"	\$1,051.00
<input type="checkbox"/> QTY ____	PBE2120-HD	20" - 21"	20"	\$1,051.00
<input type="checkbox"/> QTY ____	PBE2216-HD	22" - 23"	16"	\$1,051.00
<input type="checkbox"/> QTY ____	PBE2220-HD	22" - 23"	20"	\$1,051.00
<input type="checkbox"/> QTY ____	PBE2316-HD	23" - 24"	16"	\$1,051.00
<input type="checkbox"/> QTY ____	PBE2320-HD	23" - 24"	20"	\$1,051.00
<input type="checkbox"/> QTY ____	PBE2416-HD	24" - 25"	16"	\$1,051.00
<input type="checkbox"/> QTY ____	PBE2420-HD	24" - 25"	20"	\$1,051.00

Elite Heavy-Duty Extra Outer Back Cover (Refer to back sizes above for proper fit)

▶ ADP #: SEMCF102L

MODEL	COVER OPTION	MSRP
<input type="checkbox"/> PBEC(wwhh)-HD	Meshtex	\$205.00

SPECIFY: WIDTH ____ HEIGHT ____ QTY ____

Elite Extra Wide Heavy-Duty Back

▶ ADP #: SE0001052



MODEL	FITS WIDTH	FITS LENGTH	MSRP
PBE(ww16)-HD	REFERENCE CHART BELOW		\$1,666.00
SPECIFY:	WIDTH ____	<input type="checkbox"/> QTY ____	
PBE(ww20)-HD	REFERENCE CHART BELOW		\$1,666.00
SPECIFY:	WIDTH ____	<input type="checkbox"/> QTY ____	

W I D T H (WW)	
HEIGHT	25" 26" 27" 28" 29" 30"
16"	X S X X X X
20"	X S X X X X

<input type="checkbox"/> S	Stock Item
<input type="checkbox"/> X	NON Stock Item - Additional Lead time

Elite Extra Wide Heavy-Duty Extra Outer Back Cover (two week lead time)*

▶ ADP #: SEMCF102L

MODEL	COVER OPTION	MSRP
<input type="checkbox"/> PBEC(ww16)	Meshtex	\$260.00
<input type="checkbox"/> PBEC(ww20)	Meshtex	\$260.00

SPECIFY: WIDTH ____ HEIGHT ____ QTY ____

* Made to order and non-refundable

MATRIX® BACKS – CANADIAN PRICE LIST/ORDER FORM

MATRIX® ELITE TR BACK: Standard – Positioning Back

- Easy Set Hardware fits ¾", 7/8", 1" diameter back canes
- See Page 28 -29 for other hardware options
- Back Shell made without scapular cutout and includes SuperSoft foam. Recommended for Tilt/Recline applications
- 3" Contour Depth
- Weight capacity up to 300 lbs
- Pre-drilled for headrest attachment, includes headrest adapter plate
- Mounting Pins allow Elite TR Back to fit 1" narrower/wider than back model. Standard/Long Mounting Pins are included with each back
- Standard Meshtex Fabric upholstery - Cover Fabric Reference on Page 4

Elite TR Back

▶ ADP #: SE0001214



QUANTITY	MODEL	FITS WIDTH	FITS LENGTH	MSRP
<input type="checkbox"/> QTY ___	PBE1514-TR	15"-16"	14"	\$866.00
<input type="checkbox"/> QTY ___	PBE1516-TR	15"-16"	16"	\$866.00
<input type="checkbox"/> QTY ___	PBE1518-TR	15"-16"	18"	\$866.00
<input type="checkbox"/> QTY ___	PBE1520-TR	15"-16"	20"	\$866.00
<input type="checkbox"/> QTY ___	PBE1614-TR	16"-17"	14"	\$866.00
<input type="checkbox"/> QTY ___	PBE1616-TR	16"-17"	16"	\$866.00
<input type="checkbox"/> QTY ___	PBE1618-TR	16"-17"	18"	\$866.00
<input type="checkbox"/> QTY ___	PBE1620-TR	16"-17"	20"	\$866.00
<input type="checkbox"/> QTY ___	PBE1714-TR	17"-18"	14"	\$866.00
<input type="checkbox"/> QTY ___	PBE1716-TR	17"-18"	16"	\$866.00
<input type="checkbox"/> QTY ___	PBE1718-TR	17"-18"	18"	\$866.00
<input type="checkbox"/> QTY ___	PBE1720-TR	17"-18"	20"	\$866.00
<input type="checkbox"/> QTY ___	PBE1814-TR	18"-19"	14"	\$866.00
<input type="checkbox"/> QTY ___	PBE1816-TR	18"-19"	16"	\$866.00
<input type="checkbox"/> QTY ___	PBE1818-TR	18"-19"	18"	\$866.00
<input type="checkbox"/> QTY ___	PBE1820-TR	18"-19"	20"	\$866.00
<input type="checkbox"/> QTY ___	PBE1914-TR	19"-20"	14"	\$866.00
<input type="checkbox"/> QTY ___	PBE1916-TR	19"-20"	16"	\$866.00
<input type="checkbox"/> QTY ___	PBE1918-TR	19"-20"	18"	\$866.00
<input type="checkbox"/> QTY ___	PBE1920-TR	19"-20"	20"	\$866.00
<input type="checkbox"/> QTY ___	PBE2014-TR	20"-21"	14"	\$866.00
<input type="checkbox"/> QTY ___	PBE2016-TR	20"-21"	16"	\$866.00
<input type="checkbox"/> QTY ___	PBE2018-TR	20"-21"	18"	\$866.00
<input type="checkbox"/> QTY ___	PBE2020-TR	20"-21"	20"	\$866.00

Elite TR Extra Back Cover (Refer to back sizes above for proper fit)

▶ ADP #: SEMCF102L

MODEL	COVER OPTION	MSRP
<input type="checkbox"/> PBEC(wwhh)-TR	Meshtex	\$185.00

SPECIFY: WIDTH ___ HEIGHT ___ QTY ___

MATRIX® BACKS – CANADIAN PRICE LIST/ORDER FORM

MATRIX® ELITE DEEP BACK: Standard – Positioning Back

- Easy Set Hardware fits ¾", 7/8", 1" diameter back canes
- See Page 28 -29 for other hardware options
- 6" Contour Depth
- Weight capacity up to 300 lbs
- All Elite Deep Backs 14" and wider x 14" and longer are pre-drilled for headrest attachment, and include headrest adapter plate
- Mounting Pins allow Elite Back to fit 1" narrower/wider than back model. Standard/Long Mounting Pins are included with each back
- Standard Meshtex Fabric upholstery - Cover Fabric Reference on Page 4

Elite Deep Back

▶ ADP #: SEB1M0026



QUANTITY	MODEL	FITS WIDTH	FITS LENGTH	MSRP
<input type="checkbox"/> QTY ____	EDB1412	14"-15"	12"	\$918.00
<input type="checkbox"/> QTY ____	EDB1416	14"-15"	16"	\$918.00
<input type="checkbox"/> QTY ____	EDB1418	14"-15"	18"	\$918.00
<input type="checkbox"/> QTY ____	EDB1420	14"-15"	20"	\$918.00
<input type="checkbox"/> QTY ____	EDB1510	15"-16"	10"	\$918.00
<input type="checkbox"/> QTY ____	EDB1512	15"-16"	12"	\$918.00
<input type="checkbox"/> QTY ____	EDB1514	15"-16"	14"	\$918.00
<input type="checkbox"/> QTY ____	EDB1516	15"-16"	16"	\$918.00
<input type="checkbox"/> QTY ____	EDB1518	15"-16"	18"	\$918.00
<input type="checkbox"/> QTY ____	EDB1520	15"-16"	20"	\$918.00
<input type="checkbox"/> QTY ____	EDB1610	16"-17"	10"	\$918.00
<input type="checkbox"/> QTY ____	EDB1612	16"-17"	12"	\$918.00
<input type="checkbox"/> QTY ____	EDB1614	16"-17"	14"	\$918.00
<input type="checkbox"/> QTY ____	EDB1616	16"-17"	16"	\$918.00
<input type="checkbox"/> QTY ____	EDB1618	16"-17"	18"	\$918.00
<input type="checkbox"/> QTY ____	EDB1620	16"-17"	20"	\$918.00
<input type="checkbox"/> QTY ____	EDB1710	17"-18"	10"	\$918.00
<input type="checkbox"/> QTY ____	EDB1712	17"-18"	12"	\$918.00
<input type="checkbox"/> QTY ____	EDB1714	16"-17"	14"	\$918.00
<input type="checkbox"/> QTY ____	EDB1716	17"-18"	16"	\$918.00
<input type="checkbox"/> QTY ____	EDB1718	17"-18"	18"	\$918.00
<input type="checkbox"/> QTY ____	EDB1720	17"-18"	20"	\$918.00
<input type="checkbox"/> QTY ____	EDB1810	18"-19"	10"	\$918.00
<input type="checkbox"/> QTY ____	EDB1812	18"-19"	12"	\$918.00
<input type="checkbox"/> QTY ____	EDB1814	18"-19"	14"	\$918.00
<input type="checkbox"/> QTY ____	EDB1816	18"-19"	16"	\$918.00
<input type="checkbox"/> QTY ____	EDB1818	18"-19"	18"	\$918.00
<input type="checkbox"/> QTY ____	EDB1820	18"-19"	20"	\$918.00
<input type="checkbox"/> QTY ____	EDB1910	19"-20"	10"	\$918.00
<input type="checkbox"/> QTY ____	EDB1912	19"-20"	12"	\$918.00
<input type="checkbox"/> QTY ____	EDB1914	19"-20"	14"	\$918.00
<input type="checkbox"/> QTY ____	EDB1916	19"-20"	16"	\$918.00
<input type="checkbox"/> QTY ____	EDB1918	19"-20"	18"	\$918.00
<input type="checkbox"/> QTY ____	EDB1920	19"-20"	20"	\$918.00
<input type="checkbox"/> QTY ____	EDB2010	20"-21"	10"	\$918.00
<input type="checkbox"/> QTY ____	EDB2012	20"-21"	12"	\$918.00
<input type="checkbox"/> QTY ____	EDB2014	20"-21"	14"	\$918.00
<input type="checkbox"/> QTY ____	EDB2016	20"-21"	16"	\$918.00
<input type="checkbox"/> QTY ____	EDB2018	20"-21"	18"	\$918.00
<input type="checkbox"/> QTY ____	EDB2020	20"-21"	20"	\$918.00

Elite Deep Extra Back Cover (Refer to back sizes above for proper fit)

▶ ADP #: SEMCF104L

MODEL	COVER OPTION	MSRP
<input type="checkbox"/> EDBC(wwhh)	Meshtex	\$175.00

SPECIFY: WIDTH ____ HEIGHT ____ QTY ____

MATRIX® BACKS – CANADIAN PRICE LIST/ORDER FORM

MATRIX® ELITE DEEP BACK (With SuperSoft Foam): Standard – Positioning Back

- SuperSoft Foam - 1" soft over 1" firm HR foam
- Mounting Pins allow Elite Deep Back to fit 1" narrower/wider than back model. Standard/Long Mounting Pins are included with each back
- Standard Meshtex Fabric upholstery - Cover Fabric Reference on Page 4

Elite Deep Back with SuperSoft Foam

▶ **ADP #: SEB1M0026+ SEBND0020** (Additional pressure relief)



QUANTITY	MODEL	FITS WIDTH	FITS LENGTH	MSRP
<input type="checkbox"/> QTY _____	EDB1616-EBSS	16"-17"	16"	\$1021.00
<input type="checkbox"/> QTY _____	EDB1618-EBSS	16"-17"	18"	\$1021.00
<input type="checkbox"/> QTY _____	EDB1620-EBSS	16"-17"	20"	\$1021.00
<input type="checkbox"/> QTY _____	EDB1816-EBSS	18"-19"	16"	\$1021.00
<input type="checkbox"/> QTY _____	EDB1818-EBSS	18"-19"	18"	\$1021.00
<input type="checkbox"/> QTY _____	EDB1820-EBSS	18"-19"	20"	\$1021.00
<input type="checkbox"/> QTY _____	EDB2016-EBSS	20"-21"	16"	\$1021.00
<input type="checkbox"/> QTY _____	EDB2018-EBSS	20"-21"	18"	\$1021.00
<input type="checkbox"/> QTY _____	EDB2020-EBSS	20"-21"	20"	\$1021.00

Elite with SuperSoft Foam Extra Back Cover (Refer to back sizes for proper fit)

▶ **ADP #: SEMCF104L**

MODEL	COVER OPTION	MSRP
<input type="checkbox"/> EDBC(wwhh)-EBSS	Meshtex	\$278.00

SPECIFY: WIDTH _____ HEIGHT _____ QTY _____

MATRX® BACKS – CANADIAN PRICE LIST/ORDER FORM

MATRX® ELITE DEEP HEAVY-DUTY BACK: Bariatric – Positioning Back

- Heavy-Duty Easy Set Hardware fits 3/4", 7/8", 1" diameter back canes
- See Page 28 -29 for other hardware options
- 6" Contour Depth
- Weight capacity up to 500 lbs
- Backs include reinforcement plate for headrest
- Mounting Pins allow Elite Deep HD Back to fit 1" narrower/wider than back model
Standard/Long Mounting Pins are included with each back
- All Elite Backs 14" and wider x 14" and longer are pre-drilled for headrest attachment, includes headrest adapter plate
- Standard Meshtex Fabric upholstery - Cover Fabric Reference on Page 4

Elite Deep Heavy-Duty Back

▶ ADP #: SEB1M0040



QUANTITY	MODEL	FITS WIDTH	FITS LENGTH	MSRP
<input type="checkbox"/> QTY ____	EDB2116-HD	21"-22"	16"	\$1095.00
<input type="checkbox"/> QTY ____	EDB2118-HD	21"-22"	18"	\$1095.00
<input type="checkbox"/> QTY ____	EDB2120-HD	21"-22"	20"	\$1095.00
<input type="checkbox"/> QTY ____	EDB2216-HD	22"-23"	16"	\$1095.00
<input type="checkbox"/> QTY ____	EDB2218-HD	22"-23"	18"	\$1095.00
<input type="checkbox"/> QTY ____	EDB2220-HD	22"-23"	20"	\$1095.00
<input type="checkbox"/> QTY ____	EDB2316-HD	23"-24"	16"	\$1095.00
<input type="checkbox"/> QTY ____	EDB2318-HD	23"-24"	18"	\$1095.00
<input type="checkbox"/> QTY ____	EDB2320-HD	23"-24"	20"	\$1095.00
<input type="checkbox"/> QTY ____	EDB2416-HD	24"-25"	16"	\$1095.00
<input type="checkbox"/> QTY ____	EDB2418-HD	24"-25"	18"	\$1095.00
<input type="checkbox"/> QTY ____	EDB2420-HD	24"-25"	20"	\$1095.00

Elite Deep Heavy-Duty Back Cover (Refer to back sizes above for proper fit)

▶ ADP #: SEMCF104L

MODEL	COVER OPTION	MSRP
<input type="checkbox"/> EDBC(wwhh)-HD	Meshtex	\$229.00

SPECIFY: WIDTH ____ HEIGHT ____ QTY ____

MATRX® ELITE TR HEAVY-DUTY BACK: Bariatric – Positioning Back

- Heavy-Duty Easy Set Hardware fits 3/4", 7/8", 1" diameter back canes
- See Page 28 -29 for other hardware options
- 3" Contour Depth
- Weight capacity up to 500 lbs
- Backs include reinforcement plate for headrest
- Mounting Pins allow Elite TR HD Back to fit 1" narrower/wider than back model. Standard/Long Mounting Pins are included with each back
- All Elite Backs 15" and wider x 16" and longer are pre-drilled for headrest attachment, includes headrest adapter plate
- Standard Meshtex Fabric upholstery - Cover Fabric Reference on Page 4

Elite TR Heavy-Duty Back

▶ ADP #: SE0001051+ SEBND0020 (Additional pressure relief)



QUANTITY	MODEL	FITS WIDTH	FITS LENGTH	MSRP
<input type="checkbox"/> QTY ____	PBE2120-TRHD	21"-22"	20"	\$1151.00
<input type="checkbox"/> QTY ____	PBE2220-TRHD	22"-23"	20"	\$1151.00
<input type="checkbox"/> QTY ____	PBE2320-TRHD	23"-24"	20"	\$1151.00
<input type="checkbox"/> QTY ____	PBE2420-TRHD	24"-25"	20"	\$1151.00

Elite TR Heavy-Duty Back Cover (Refer to back sizes above for proper fit)

▶ ADP #: SEMCF104L

MODEL	COVER OPTION	MSRP
<input type="checkbox"/> PBEC(wwhh)-TRHD	Meshtex	\$185.00

SPECIFY: WIDTH ____ HEIGHT ____ QTY ____

BACK UPGRADES Available for Standard Elite Backs

Personalized Dipped Back Shell (4 week lead time)

(Backs with this modification may not be cancelled or returned after order is placed)



QUANTITY	MODEL	DESCRIPTION	MSRP
<input type="checkbox"/> QTY ____	DBSE	Dipped Back Shell	\$435

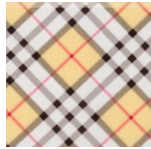
COLOR OPTIONS:

- SPECIFY: DBSE-24 (LACE) DBSE-2 (CAMOUFLAGE)
 DBSE-25 (PINK LEOPARD) DBSE-4 (FLAMES)
 DBSE-26 (FLAMINGO) DBSE-30 (ELECTRIC STORM)
 DBSE-27 (BURBERRY) DBSE-31 (SNAKE SKIN)
 DBSE-28 (SUNFLOWERS) DBSE-32 (MILITARY CAMO)
 DBSE-29 (CANCER RIBBONS) DBSE-1 (U.S. FLAGS)

Please contact Customer service for additional design options



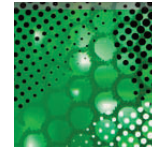
LACE



BURBERRY



CAMOUFLAGE



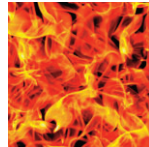
SNAKE SKIN



PINK LEOPARD



SUNFLOWERS



FLAMES



MILITARY CAMO



FLAMINGO



CANCER RIBBONS



ELECTRIC STORM



U.S. FLAG

MATRIX® BACKS – CANADIAN PRICE LIST/ORDER FORM

MATRIX® ELITE LATERALS: Available for Matrix Elite, Elite Deep & Elite Heavy-Duty Backs

Fixed - Available for Matrix Elite & Elite Heavy-Duty Backs

► ADP #: SELD0005



QUANTITY	MODEL	DESCRIPTION	MSRP
<input type="checkbox"/> QTY ____	PBLS-L	Standard Fixed Hardware-Left or Right (each)	\$116.00
<input type="checkbox"/> QTY ____	PBLS-R	Pad 5" Long x 7.5" Long	
<input type="checkbox"/> QTY ____	PBSS-L	Small Fixed Hardware-Left or Right (each)	\$113.00
<input type="checkbox"/> QTY ____	PBSS-R	Pad 3" Long x 5.5" Long	
<input type="checkbox"/> QTY ____	PBOL-L	Offset Lateral Pad w/Fixed Hardware (each)	\$125.00
<input type="checkbox"/> QTY ____	PBOL-R	Pad 5" Long x 7.5" Long Can be mounted 3" longer/Lower	

+ Elite Fixed Laterals are not available on 12" and 13" Wide Elite backs, please select Mini Fixed Laterals on Page 6

Swing-Away Hardware - Available only for Matrix E2 & Elite Backs

► ADP #: SEICF202L (Hardware) + SELCF102L (Pad)



QUANTITY	MODEL	DESCRIPTION	MSRP
<input type="checkbox"/> QTY ____	SALEB-XS-L	Swing-Away Lateral Hardware with XS Pad-Left or Right (each)	\$365.00
<input type="checkbox"/> QTY ____	SALEB-XS-R	Pad 3.25" Long x 4.25" Long	
<input type="checkbox"/> QTY ____	SALEB-S-L	Swing-Away Lateral Hardware with S Pad-Left or Right (each)	\$365.00
<input type="checkbox"/> QTY ____	SALEB-S-R	Pad 3.5" Long x 5.25" Long	
<input type="checkbox"/> QTY ____	SALEB-M-L	Swing-Away Lateral Hardware with M Pad-Left or Right (each)	\$365.00
<input type="checkbox"/> QTY ____	SALEB-M-R	Pad 3.75" Long x 5.75" Long	
<input type="checkbox"/> QTY ____	SALEB-L-L	Swing-Away Lateral Hardware with L Pad-Left or Right (each)	\$365.00
<input type="checkbox"/> QTY ____	SALEB-L-R	Pad 4.25" Long x 6.5" Long	

Offset, Swing-Away Hardware* Available only for Matrix E2 & Elite Backs

► ADP #: SEICF202L (Hardware) + SELCF102L (Pad)

Allows 3" variance (longer or lower) pad position relative to attachment slot.



QUANTITY	MODEL	DESCRIPTION	MSRP
<input type="checkbox"/> QTY ____	OSALEB-XS-L	Offset, Swing-Away Lateral Hardware with	\$365.00
<input type="checkbox"/> QTY ____	OSALEB-XS-R	XS Pad-Left or Right (each)	
<input type="checkbox"/> QTY ____		Pad 3.25" Long x 4.25" Long	
<input type="checkbox"/> QTY ____	OSALEB-S-L	Offset, Swing-Away Lateral Hardware with	\$365.00
<input type="checkbox"/> QTY ____	OSALEB-S-R	S Pad-Left or Right (each)	
<input type="checkbox"/> QTY ____		Pad 3.5" Long x 5.25" Long	
<input type="checkbox"/> QTY ____	OSALEB-M-L	Offset, Swing-Away Lateral Hardware with	\$365.00
<input type="checkbox"/> QTY ____	OSALEB-M-R	M Pad-Left or Right (each)	
<input type="checkbox"/> QTY ____		Pad 3.75" Long x 5.75" Long	
<input type="checkbox"/> QTY ____	OSALEB-L-L	Offset, Swing-Away Lateral Hardware with	\$365.00
<input type="checkbox"/> QTY ____	OSALEB-L-R	L Pad-Left or Right (each)	
<input type="checkbox"/> QTY ____		Pad 4.25" Long x 6.5" Long	

HARDWARE: Available for Standard Matrix PB and Elite Backs

Matrix Back Interface Kit



QUANTITY	MODEL	DESCRIPTION	MSRP
		Interface Kit for Power Tilt/Recline – Power Wheelchair application (Available for Elite, Elite TR, Elite HD, Elite TR HD, PB, PB HD Backs models (16" wide-20" wide)	
<input type="checkbox"/> QTY ____	PERMMH	Mounting Kit for Permobil Tilt/Recline	\$475.00
<input type="checkbox"/> QTY ____	QUANMH	Mounting Kit for Quantum Tilt/Recline	\$475.00
<input type="checkbox"/> QTY ____	QUIKMH	Mounting Kit for Quickie Tilt/Recline	\$475.00

STANDARD HARDWARE: Available for Matrix PB and Elite Backs

Hardware Options

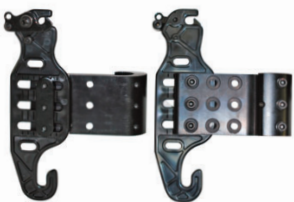
Substitutions for Easy Set hardware are available & must be specified at time of ordering back



SUBSTITUTION MODEL #	HARDWARE ONLY MODEL #	MSRP
Easy Set Hardware (pair) - Fits 3/4", 7/8", 1" back canes (Standard on PB & Elite Backs)		
	<input type="checkbox"/> PBMH	\$291.00
Easy Set Hardware (pair) - Fits 1 1/8" back canes		
<input type="checkbox"/> PBMH-QU	\$60.00	<input type="checkbox"/> PBMH-Q
		\$291.00
Easy Set Hardware (pair) - Fits 1 1/4" back canes		
<input type="checkbox"/> PBMH-XU	\$60.00	<input type="checkbox"/> PBMH-X
		\$291.00



Heavy-Duty Easy Set Hardware (pair) - Fits 3/4", 7/8", 1" back canes (Upcharge on Standard PB & Elite Backs)		
<input type="checkbox"/> HDU	\$170.00	<input type="checkbox"/> HDMH
		\$413.00



Extended Range Mounting Hardware (pair) - Provides additional 2" Depth adjustment (Available for all Matrix backs – Standard, Not compatible with SMH/SMH-U)		
<input type="checkbox"/> ERMHU	\$122.00	<input type="checkbox"/> ERMH
		\$341.00

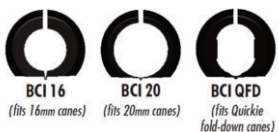


Split Mounting Hardware (pair) - (Available for Standard PB & Elite Backs) For avoidance of obstacles on Frame		
<input type="checkbox"/> SMHUN/C	<input type="checkbox"/> SMH
		\$291.00



Fixed Space Saver Mounting Hardware (pair) Permanent mount recommended for Power Wheelchair application or when portability is not required For Matrix PB & Elite Standard or Heavy-Duty Backs		
<input type="checkbox"/> FSSHUN/C	<input type="checkbox"/> FSSH
		\$291.00
For Formula Tilt/Recline		
<input type="checkbox"/> FSSH-FTRU	\$62.00	<input type="checkbox"/> FSSH-FTR
		\$291.00

Back Cane Inserts



Back cane inserts to be used with EasySet and MiniSet Mounting Hardware		
For 16mm back canes (pair)		For 20mm back canes (pair)
<input type="checkbox"/> BCI16	\$5.00	<input type="checkbox"/> BCI20
		\$5.00
For Quickie fold down back canes (pair)		
<input type="checkbox"/> BCIQFD	\$5.00	

HEAVY-DUTY HARDWARE UPGRADES: Available for Matrix Heavy-Duty PB and Elite Backs

Hardware Options

No-charge substitutions for Heavy-Duty Easy Set hardware are available & must be specified at time of ordering back



NO-CHARGE SUBSTITUTION MODEL #	HARDWARE ONLY MODEL #	MSRP
Heavy-Duty Easy Set Hardware (pair) - Fits 3/4", 7/8", 1" back canes (Standard on PB & Elite Heavy-Duty Backs)		
	<input type="checkbox"/> HDMH	\$413.00
Easy Set Hardware (pair) - Fits 1 1/8" back canes		
<input type="checkbox"/> PBMH-QU	N/C	
	<input type="checkbox"/> PBMH-Q	\$291.00
Easy Set Hardware (pair) - Fits 1 1/4" back canes		
<input type="checkbox"/> PBMH-XU	N/C	
	<input type="checkbox"/> PBMH-X	\$291.00



Extended Range Mounting Hardware (pair) - Provides additional 2" Depth adjustment - Fits 3/4", 7/8", 1" back canes (Available for all Matrix backs – Standard and Heavy Duty, Not compatible with SMH/SMH-U)		
<input type="checkbox"/> ERMH-HDU	N/C	
	<input type="checkbox"/> ERMH-HD	\$413.00



Fixed Space Saver Mounting Hardware (pair) Permanent mount recommended for Power Wheelchair application or when portability is not required For Matrix PB & Elite Standard or Heavy-Duty Back		
<input type="checkbox"/> FSSHU	N/C	
	<input type="checkbox"/> FSSH	\$291.00
For Formula Tilt/Recline		
<input type="checkbox"/> FSSH-FTRU	\$62.00	
	<input type="checkbox"/> FSSH-FTR	\$291.00

MATRIX® BACKS – CANADIAN PRICE LIST/ORDER FORM

BACK OPTIONS, MODIFICATIONS & ACCESSORIES

Infection Control Full Back Slipcover with zipper:

**Phasing out (check availability before placing an order or proceed to order Protect - Infection Control Slipcover)*



If ordered with a Back WSCU\$120.00 Infection Slipcover Only WSC\$150.00

SPECIFY: Elite⁺ Elite TR⁺ Elite Deep
SPECIFY: WIDTH_____ LENGTH_____ QTY_____

E2 Protect - Infection Control Slipcover* Available on All Matrix Elite, E2 and TR Back Models

*Stock sizes available (in Black): *Other sizes are available (in Blue) - 4 week lead time*



Infection Control Slipcover if ordered with Back	Infection Control Slipcover Only
Standard Back	Standard Back
<input type="checkbox"/> PROTE2SU\$95.00	<input type="checkbox"/> PROTE2S\$125.00
Deep Back	Deep Back
<input type="checkbox"/> PROTE2DU Deep Back\$95.00	<input type="checkbox"/> PROTE2D\$125.00

SPECIFY: QTY_____

<input type="checkbox"/> 1406*	<input type="checkbox"/> 1506*	<input type="checkbox"/> 1606*	<input type="checkbox"/> 1706*	<input type="checkbox"/> 1806*	<input type="checkbox"/> 1906*	<input type="checkbox"/> 2006*
<input type="checkbox"/> 1408*	<input type="checkbox"/> 1508*	<input type="checkbox"/> 1608*	<input type="checkbox"/> 1708	<input type="checkbox"/> 1808*	<input type="checkbox"/> 1908*	<input type="checkbox"/> 2008*
<input type="checkbox"/> 1410 *	<input type="checkbox"/> 1510	<input type="checkbox"/> 1610	<input type="checkbox"/> 1710	<input type="checkbox"/> 1810*	<input type="checkbox"/> 1910*	<input type="checkbox"/> 2010*
<input type="checkbox"/> 1412	<input type="checkbox"/> 1512*	<input type="checkbox"/> 1612	<input type="checkbox"/> 1712	<input type="checkbox"/> 1812	<input type="checkbox"/> 1912*	<input type="checkbox"/> 2012*
<input type="checkbox"/> 1414	<input type="checkbox"/> 1514	<input type="checkbox"/> 1614	<input type="checkbox"/> 1714*	<input type="checkbox"/> 1814	<input type="checkbox"/> 1914*	<input type="checkbox"/> 2014
<input type="checkbox"/> 1416	<input type="checkbox"/> 1516	<input type="checkbox"/> 1616	<input type="checkbox"/> 1716	<input type="checkbox"/> 1816	<input type="checkbox"/> 1916	<input type="checkbox"/> 2016
<input type="checkbox"/> 1418*	<input type="checkbox"/> 1518*	<input type="checkbox"/> 1618	<input type="checkbox"/> 1718	<input type="checkbox"/> 1818	<input type="checkbox"/> 1918	<input type="checkbox"/> 2018
<input type="checkbox"/> 1420*	<input type="checkbox"/> 1520	<input type="checkbox"/> 1620	<input type="checkbox"/> 1720	<input type="checkbox"/> 1820	<input type="checkbox"/> 1920	<input type="checkbox"/> 2020

Back Modifications* - 2 week lead time

(Products ordered with custom sizing or modifications may not be cancelled or returned after order is placed)



QTY_____ EBSS Elite Back/Cover - SuperSoft Foam \$103.00
** Not Available on 14" High Elite Backs - Must order Elite-TR Back*

SPECIFY: Elite Elite Deep Elite Heavy-Duty
SPECIFY: WIDTH_____ HEIGHT_____ QTY_____



QTY_____ PBVF PB/Elite Back/Cover Modification \$103.00
Visco Foam over HR Foam

SPECIFY: PB PB Deep PB Heavy-Duty PB Deep Heavy-Duty
 Elite Elite Full Elite Tilt/Recline Elite Deep
 Elite Heavy-Duty
SPECIFY: WIDTH_____ HEIGHT_____ QTY_____

QTY_____ MAC Miscellaneous Modification +\$133.00
Special Request - Approval required

SPECIFY: _____

QTY_____ NSF Non-Standard Fabric Selection +\$103.00
Choose this option if WSC is not available in the size required and a fully enclosed infection control cover is needed. Otherwise proceed to order PROTECT.

SPECIFY: STARTEX-F (Startex Cover - Fabric) STARTEX-S (Startex Cover -Smooth)
SPECIFY: _____

SPECIFY: WIDTH_____ HEIGHT_____ QTY_____

BACK OPTIONS, MODIFICATIONS & ACCESSORIES

Back Modifications* - 2 week lead time

(Products ordered with custom sizing or modifications may not be cancelled or returned after order is placed)

QTY____ PBSC PB Back Stretch Cover Upgrade +\$103.00
For use with Foam-in-place Kit on Matrix PB Back

SPECIFY: PB PB Deep PB Heavy-Duty PB Deep Heavy-Duty

SPECIFY: WIDTH____ LENGTH____ QTY____

Back Options

	QUANTITY	MODEL	COMPONENT	MSRP
	<input type="checkbox"/> QTY____	EMP	Extended Mounting Pins <i>Allows Matrix PB and Elite backs to be mounted on chairs up to 2" wider than the back model width. For standard backs up to 20" wide only, not compatible with Heavy-Duty models.</i>	\$60.00
	<input type="checkbox"/> QTY____	CHIEB	Chest Harness Interface Kit - for Elite Back <i>Chest Harness is not included - mounting kit only</i>	\$103.00
	<input type="checkbox"/> QTY____	CHIPB	Chest Harness Interface Kit - for PB Back <i>Chest Harness is not included - mounting kit only</i>	\$52.00
	<input type="checkbox"/> QTY____	EHRA-S	Small Headrest Adapter - for Elite Back <i>For Attachment of headrests to Elite 12" wide backs</i>	\$45.00
	<input type="checkbox"/> QTY____	EHRA-M	Medium Headrest Adapter - for Elite Back <i>For Attachment of headrests to Elite Backs 13" - 17" wide backs</i>	\$45.00
	<input type="checkbox"/> QTY____	EHRA-L	Large Headrest Adapter - for Elite Back <i>For Attachment of headrests to Elite Heavy-Duty 18" - 22" wide backs</i>	\$45.00
	<input type="checkbox"/> QTY____	PFLAP-XS	X-Small Privacy Flap <i>10" W x 16" H - fits 12"-14" wide backs</i>	\$60.00
	<input type="checkbox"/> QTY____	PFLAP-S	Small Privacy Flap <i>13" W x 16" H - fits 15"-16" wide backs</i>	\$60.00
	<input type="checkbox"/> QTY____	PFLAP-M	Medium Privacy Flap <i>15" W- 16" H - fits 17"-18" wide backs</i>	\$60.00
	<input type="checkbox"/> QTY____	PFLAP-L	Large Privacy Flap <i>17"W - 16" H - fits 19"-20" wide backs</i>	\$60.00
	<input type="checkbox"/> QTY____	PFLAP-XL	X-Large Privacy Flap <i>19" W- 16" H - fits 21"-22" wide backs</i>	\$60.00
	<input type="checkbox"/> QTY____	PFLAP-XXL	XX-Large Privacy Flap <i>21" W- 16" H - fits 23"-24" wide backs</i>	\$60.00
	<input type="checkbox"/> QTY____	PBCR	Posture Back Cane Replacement (pair) <i>1" Diameter back cane replacement kit</i>	\$148.00

MATRIX® BACKS – CANADIAN PRICE LIST/ORDER FORM

- Carbon fiber back with foam and cover
- 3" Contour Depth
- Weight capacity up to 250 lbs
- Extra outer cover includes foam
- Breathable Spacer Mesh cover, 9" and longer models with leatherette side panels

MX2 Back (Back Hardware NOT included – see below)

▶ ADP #: SE0001460 (all 6" Long) ▶ ADP #: SE0001461 (all 9" Long)
▶ ADP #: SE0001462 (all 12" Long) ▶ ADP #: SE0001463 (all 16" Long)



QUANTITY	MODEL	FITS WIDTH	FITS LENGTH	MSRP
<input type="checkbox"/> QTY ____	IMX21406	14"	06"	\$756.00
<input type="checkbox"/> QTY ____	IMX21409	14"	09"	\$790.00
<input type="checkbox"/> QTY ____	IMX21412	14"	12"	\$825.00
<input type="checkbox"/> QTY ____	IMX21416	14"	16"	\$859.00
<input type="checkbox"/> QTY ____	IMX21506	15"	06"	\$756.00
<input type="checkbox"/> QTY ____	IMX21509	15"	09"	\$790.00
<input type="checkbox"/> QTY ____	IMX21512	15"	12"	\$825.00
<input type="checkbox"/> QTY ____	IMX21516	15"	16"	\$859.00
<input type="checkbox"/> QTY ____	IMX21606	16"	06"	\$756.00
<input type="checkbox"/> QTY ____	IMX21609	16"	09"	\$790.00
<input type="checkbox"/> QTY ____	IMX21612	16"	12"	\$825.00
<input type="checkbox"/> QTY ____	IMX21616	16"	16"	\$859.00
<input type="checkbox"/> QTY ____	IMX21706	17"	06"	\$756.00
<input type="checkbox"/> QTY ____	IMX21709	17"	09"	\$790.00
<input type="checkbox"/> QTY ____	IMX21712	17"	12"	\$825.00
<input type="checkbox"/> QTY ____	IMX21716	17"	16"	\$859.00
<input type="checkbox"/> QTY ____	IMX21806	18"	06"	\$756.00
<input type="checkbox"/> QTY ____	IMX21809	18"	09"	\$790.00
<input type="checkbox"/> QTY ____	IMX21812	18"	12"	\$825.00
<input type="checkbox"/> QTY ____	IMX21816	18"	16"	\$859.00

MX2 Extra Back Cover (Refer to back sizes above for proper fit)

▶ ADP #: SEMCF102L

MODEL	COVER OPTION	MSRP
<input type="checkbox"/> IMXC-(wwhh)	Spacer Mesh	\$225.00

SPECIFY: WIDTH ____ HEIGHT ____ QTY ____

MATRIX MX2 HARDWARE:

MX2 Hardware Options



QUANTITY	MODEL	COMPONENT	MSRP
<input type="checkbox"/> QTY ____	IMX2CFH	Carbon Fiber Fixed Mount Hardware <i>Fits 3/4", 7/8", 1" back cane diameter</i>	\$330.00
<input type="checkbox"/> QTY ____	IMX2QRH	Quick Release Hardware <i>Fits 3/4", 7/8", 1" back cane diameter</i>	\$360.00
<input type="checkbox"/> QTY ____	MSHDU	Upgrade at time of order only available with IMX2QRH Heavy-Duty Mounting Hardware <i>Fits 3/4", 7/8", 1" back cane diameter</i>	\$95.00
<input type="checkbox"/> QTY ____	MSHD	Sold separately must have IMX2QRH Heavy-Duty Mounting Hardware <i>Fits 3/4", 7/8", 1" back cane diameter</i>	\$413.00

MATRIX MX2 ACCESSORIES

MX2 Lateral Supports



QUANTITY	MODEL	COMPONENT	MSRP
☐ QTY _____	MXLAT	MX2 Lateral Supports (each) <i>Pad 5.5" Long x 3 " Long</i>	\$123.00