

AQUATEC OCEAN ERGO



**CUSTOMER INSIGHT-LED
DESIGN TO ENHANCE
INDEPENDENCE, SAFETY
AND FLEXIBILITY.**

The Aquatec Ocean Ergo Family of shower chair commodes have been designed with user comfort, independence and dignity in mind. Based on the well-established Aquatec Ocean range, the Ocean Ergo family comes packed with a range of new features designed to make personal care activities easier for both the user and caregiver.



Yes, you can.®

OCEAN ERGO STANDARD



AQUATEC OCEAN SHOWER COMMODE CHAIR WITH FOUR 5" LOCKING WHEELS

Introducing the Aquatec Ocean ERGO shower chair. A new and more ergonomic design encourages a more upright and stable seating position. ERGO shower chairs are manufactured from corrosion-free, stainless steel. Improved caster design reduces dirt collection in the axle area. The collection pan rail holds the pan closer to avoid splatters. The pan has volume markings inside and a convenient hook on the handle holds the lid when not in use. The chair can be cleaned in an autoclave at 80°-90°C.

SPECS

Model	Standard
Length	35.3"
Width	22"
Height	40.5" - 45.5"
Product Weight	37.5 lbs
Width between Arms/Handles	18"
Seat Width	19"
Back Width	19"
Seat Depth	19"
Seat Angle	5°
Seat to Footrest	11.5" - 22.5"
Seat to Floor Height	18.5" - 23"
Capacity	330 lbs

PRODUCT FEATURES

- Ergonomic seat plate with a 5° posterior angle to support natural toileting position
- Tool-free seat height adjustment range of 5" to fit over most toilets
- Enhanced frame design for greater over toilet positioning and forward stability
- Four 5" locking casters with one true track directional lock to ease in pushing
- Rust proof, stainless steel frame
- Collection Pan with integrated measuring scale included
- Machine washable adjustable tension backrest

OCEAN ERGO

SP



Introducing the Aquatec Ocean ERGO SP self-propel shower chair. A new and more ergonomic design encourages a more upright and stable seating position. The seat plate has a 5° pre-tilt and knee lift for a more natural, squat position for toileting. Also, a new shape for the seat plate has been designed to reduce interface pressure between client and surface to pressure on genitals and bony prominences. Optional soft seat overlays provide additional comfort and support for the patient. Transfer supports at front of seat allow the user to position themselves into a more comfortable position for toileting and/or showering.

SPECS

Model	SP
Length	41"
Width	26"
Height	40.5" - 45.5"
Product Weight	50.7 lbs
Width between Arms/Handles	18"
Seat Width	19"
Back Width	19"
Seat Depth	19"
Seat Angle	5°
Seat to Footrest	11.5" - 22.5"
Height Seat to Floor	18.5" - 23"
Capacity	330 lbs

PRODUCT FEATURES

- The 24" rear wheels have quick release axle
- Ocean Ergo SP offers a Two in one design, SP (self-propel) or AP (attendant propel)
- Enhanced frame design for greater over toilet positioning and forward stability
- Tool-free seat height adjustment range of 5" to fit over most toilets
- Rust proof, stainless steel frame
- Collection Pan with integrated measuring scale included
- Machine washable adjustable tension backrest

OCEAN ERGO

XL / XL SP



Introducing the Aquatec Ocean ERGO XL shower chair with a wider seating area and a higher weight capacity. The new and more ergonomic design encourages a more upright and stable seating position. ERGO XL shower chairs are manufactured from corrosion-free, stainless steel. Improved caster design reduces dirt collection in the axle area. The collection pan rail holds the pan closer to avoid splatters. the pan has volume markings inside and a convenient hook on the handle holds the lid when not in use. The chair can be cleaned in an autoclave at 80°-90°C.

SPECS

Model	XL / XL SP
Length	35" / 41"
Width	25"
Height	40.5" - 45.5"
Product Weight	39.7 / 50.7 lbs
Width between Arms/Handles	21.75"
Seat Width	19"
Back Width	22"
Seat Depth	19"
Seat Angle	5°
Seat to Footrest	11.5" - 22.5"
Height Seat to Floor	18.5" - 23"
Capacity	398 lbs

PRODUCT FEATURES

- 398 lb weight capacity
- 21" width between armrests for greater seating space.
- Available in SP (self-propel) or AP (attendant propel) versions
- Enhanced frame design for greater over toilet positioning and forward stability
- Tool-free seat height adjustment range of 5" to fit over most toilets
- Rust proof, stainless steel frame
- Collection Pan with integrated measuring scale included
- Machine washable adjustable tension backrest

OCEAN ERGO

VIP SHOWER COMMUNE CHAIR



Introducing the Aquatec Ocean ERGO VIP tilt-in-space shower commode chair. A new and more ergonomic design encourages a more upright and stable seating position. A newly designed low force tilt feature with an increased range of -5°-40°, shifts the center of gravity without the use of a gas cylinder. The tilt transition is much smoother and reduces the overall footprint of the chair without affecting stability. In addition will allow the chair to get closer to the wall to better position the seat opening over a toilet.

SPECS

Model	VIP
Length	39"
Width	22"
Height	40.5" - 45.5"
Product Weight	51.8 lbs
Width between Arms/Handles	18"
Seat Width	19"
Back Width	19"
Seat Depth	19"
Seat Angle	5°
Seat to Footrest	12.5" - 18"
Height Seat to Floor	18.5" - 23"
Tilt Range	-5 - 40°
Capacity	330 lbs

PRODUCT FEATURES

- Piston free tilting mechanism reduces effort required to position centre of gravity
- Enhanced frame design for greater over toilet positioning and forward stability
- Tool-free seat height adjustment range of 5" to fit over most toilets
- Rust proof, stainless steel frame
- Collection Pan with integrated measuring scale included
- Machine washable adjustable tension backrest

OCEAN E-VIP

POWER HEIGHT AND TILT



Designed with the caregiver in mind, the Aquatec Ocean E-VIP focuses on the safety of the caregiver while providing a secure, non-invasive hygiene experience for the user. The E-VIP's fully powered functions provide smooth, fluid control, through a full range of tilt and height adjustments. Adjustable foot, head and back rests, removable hygiene components, waterproof electronics and stainless steel construction makes care and cleaning for a range of users simple and easy.

SPECS

Model	E-VIP
Seat Depth	18"
Seat Width	18"
Seat Height	20" - 41"
Overall Width	28.5"
Overall Length	40"
Height Under Seat with Pan	13.5" - 18"
Overall Height (Without Headrest)	42" - 64"
Width Between Armrests	18"
Distance Between Rear Wheels	25"
Maximum Posterior Tilt	35°
Maximum Anterior Tilt	5°
Weight Capacity (lbs.)	330
Product Weight (lbs.)	86

PRODUCT FEATURES

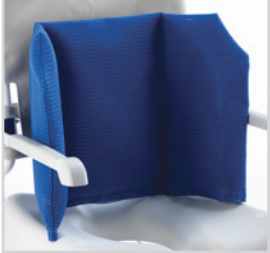
- Power adjustable tilting angle 5° to 35° provide a safe seating and repositioning for users with limited weight bearing control and stability
- Seat height is power adjustable between 20"-41"
- Water-tight power components and stainless steel frame make it possible to clean the complete chair in an institutional washing machine up to 85°C
- Battery capacity for 40 complete lifting cycles with full load
- Comes complete with adjustable headrest, padded chest belt, collection pan and soft seat
- Compatible with most Ocean/Ocean VIP accessories*

*Except reclining backrest and anti-tippers

ACCESSORIES



ARMREST LOCK
1470077



SOFT CUSHION WITH COVER
-FITS OCEANS ERGOS
1558769



AMPUTATION SUPPORT
AP1643573 - RIGHT
AP1643574 - LEFT



LATERAL SUPPORT
1535077



VARIABLE SOFT SEAT
SET COMPLETE (GREY)
1544469



COLLECTION PAN WITH LID
10230



SMALL SOFT SEAT
AP1603145



SAFETY SUPPORT BAR
10167-10



SPLASH SHIELD
AP1603155



CHEST BELT PADDED
w/ STAINLESS HARDWARE
1470081



LEGREST COMPLETE
AP1643572 - LEFT
AP1643543 - RIGHT



HYGIENE BACK
1575299

WARRANTY

Aquatec Ocean shower commodes are covered under a two year limited warranty against manufacturing defects. Manufacturer's warranty does not cover normal wear.

All Aquatec Ocean shower commode accessories are covered for a period of one year.



Yes, you can.®

1-800-234-5678

invacare.ca

©2020

Invacare Canada
Form No. 20-117C
Rev 02/20