

INVACARE® MATRX®

ELITE™

BACK



The **Invacare® Matrx® Elite Backs** are available in a multitude of sizes and shapes, promising perfect fit for the most extensive range of back support needs. Easy Set hardware allows precise and easy adjustment of position, with options available to meet individual needs.

## Call to order

1.800.333.6900  
invacare.com

1.888.433.6818  
motionconcepts.com



**matrx**®  
SEATING SERIES

# ELITE BACK OPTIONS

**ELITE 3" CONTOUR DEPTH**



**Elite™ Back**

HCPCS Code: E2620

**ELITE TR 3" CONTOUR DEPTH**



**Elite™ TR Back**

HCPCS Code: E2620

**ELITE DEEP 6" CONTOUR DEPTH**



**Elite™ Deep Back**

HCPCS Code: 2620



**Elite™ Heavy-Duty Back**

HCPCS Code: E2621



**Elite™ TR Heavy-Duty Back**

HCPCS Pending



**Elite™ Deep Heavy-Duty Back**

HCPCS Pending



Standard



Offset

**Fixed Laterals**



Standard



Offset

**Swing-Away Laterals**

**Fixed Laterals**

Designed for Elite & Elite Heavy-Duty Backs. Mounting: Installs inside back shell; Does not compromise depth/angle adjustment.

**Options:** Standard/Offset (Left or Right)

**Swing-Away Laterals**

Designed for Invacare Matrix Elite and Elite Heavy-Duty Backs. Mounting: Installs inside back shell; Does not compromise depth/angle adjustment. Lock/release latch allows pad to swing away for side transfers.

**Options:** Standard or Offset (Left or Right)

STANDARD

HEAVY-DUTY

OPTIONS

# INVACARE® MATRX® BACK HARDWARE & OPTIONS

## MOUNTING HARDWARE OPTIONS



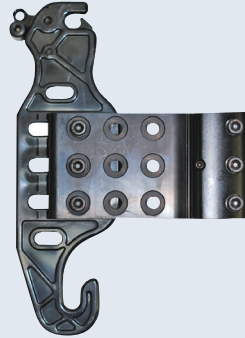
**Easy-Set**



**Split**



**Fixed Space Saver**



**Extended Range**

### Easy Set (PBMH)

300 lb. weight capacity. Adjustable depth 2" in front or behind back canes, 40° angle, height, rotation. Quick release design for easy removal/portability; Adjustable with client seated in wheelchair; Compatible with all standard Elite back models.

### Split (SMH)

500 lb. weight capacity. Allows clearance of back cane rigidizer bars or other obstacles.

### Fixed Space Saver (FSSH)

500 lb. weight capacity. Recommended for power tilt/recline or tighter width applications. Permanent mount requires tool for removal.

### Extended Range (ERMH)

Provides an extra 4" of depth adjustment. Available on standard Easy Set hardware.



**Heavy-Duty Easy Set**



**Split**



**Fixed Space Saver**

### Heavy-Duty Easy Set (HDMH)

500 lb. weight capacity. Included with all Heavy-Duty Back models; Recommended for users with high tone or heavy intended use.

### Split (SMH)

500 lb. weight capacity. Allows clearance of back cane rigidizer bars or other obstacles.

### Fixed Space Saver (FSSH)

500 lb. weight capacity. Recommended for power tilt/recline or tighter width applications. Permanent mount requires tool for removal.



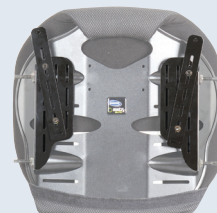
**Privacy Flap**



**Wipeable Cover**



Waterproof Fabric



**Chest Harness Interface**

### Privacy Flap

Available to fit backs from 12" to 24" wide. Meshtex fabric complete with hook and loop fastening. Easily removed for laundering.

### Wipeable Slip Cover

Additional cover adds a layer of protection for the back cover and foam. Easily removed for cleaning and ideal for incontinent users and institutions. Available for a selection of Elite & Elite Deep Backs.

### Chest Harness Interface Kit (CHIEB)

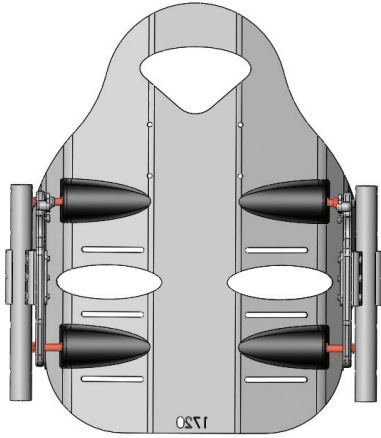
Width, height and angle adjustable chest harness interface for precise orientation of shoulder straps.

STANDARD

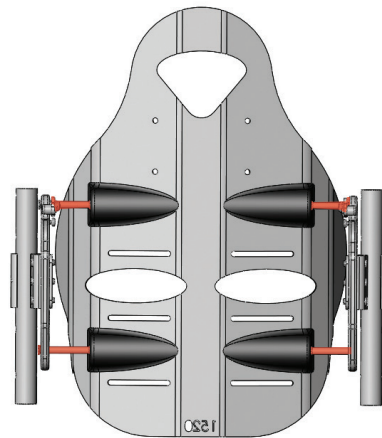
HEAVY-DUTY

OPTIONS

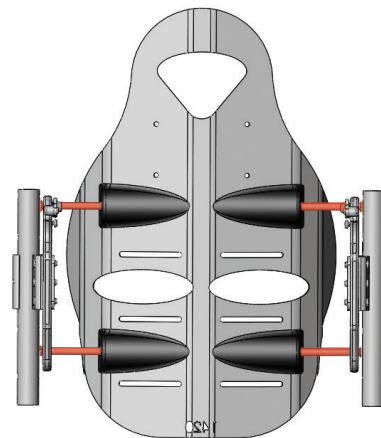
# INVACARE® MATRX® BACK ADJUSTMENTS




**Standard Mounting Pins**



**Long Mounting Pins**



**Extended Mounting Pins**

Standard (Standard) 

Long (Standard) 

Extended (Optional) 

## Mounting Pins

**Standard/Long Mounting Pins:** (Included):  
Allows Elite Back to fit same width or 1" wider wheelchairs.

**Extended Mounting Pins (EMP):**  
Allow interface to wheelchairs up to 2" wider. Available for purchase separately.



Product #	Model #	Height	Width Adjustment <sup>1,2</sup>	Depth Adjustment <sup>2</sup>	Angle Adjustment	Product Weight	Weight Capacity	Limited Warranty
Elite <sup>3</sup>	PBE	10", 12", 14"* 16", 18", 20"	12" - 20"	4"	40° range +/- 20°	1.7 lb. and up	300 lb.	2 Years
Elite Deep <sup>3</sup>	EDB	12", 16" 18", 20"	14" - 20"	4"	40° range +/- 20°	3 lb. and up	300 lb.	2 Years
Elite TR	PBE TR	16", 18", 20"	15" - 20"	4"	40° range +/- 20°	3.5 lb. and up	300 lb.	2 Years
Elite Heavy-Duty <sup>3</sup>	PBE-HD	16", 20"	21" - 24"	4"	40° range +/- 20°	6.1 lb. and up	500 lb.	2 Years
Elite Extra	PBEWW-HD	16", 20"	25" - 30"	4"	40° range +/- 20°	7.1 lb. and up	500 lb.	2 Years
Elite TR Heavy-Duty	PBE TR HD	20"	21" - 24"	4"	40° range +/- 20°	8.5 lb. and up	500 lb.	2 Years

\*14" height only available up to 18" wide

<sup>1</sup>Depth adjustment is 2" in front or behind back canes

<sup>2</sup>Limitation of depth/angle adjustment if installed on back canes narrower than model width

<sup>3</sup>SuperSoft foam option is standard on Elite TR models; available as optional upgrade on PBE, EDB, PBE-HD, and PBEWW-HD.

All references to HCPCS codes: Providers are responsible for determining the appropriate billing codes when submitting claims to the Medicare program and should consult an attorney or other advisor to discuss specific situations in further detail.

**Invacare Corporation**  
www.invacare.com

**USA**  
One Invacare Way  
Elyria, Ohio  
44035-4190  
(800) 333-6900

**Canada**  
570 Matheson Blvd. E.,  
Unit 8  
Mississauga, Ontario  
L4Z 4G4 Canada  
(800) 668-5324

**Motion Concepts**  
www.motionconcepts.com

**USA**  
700 Ensminger Rd. Suite 112  
Tonawanda, NY 14150  
(888) 443-6818  
Fax: (888) 443-6834

**Canada**  
84 Citation Dr., Unit 1-7  
Concord, ON L4K 3C1  
(866) 748-7943  
(905) 695-0134  
Fax: (905) 695-0138

© 2017

Invacare Corporation.  
All rights reserved. Trademarks are identified by the symbols ™ and ©. All trademarks are owned by or licensed to Invacare Corporation unless otherwise noted. Matrix is a registered trademark of Motion Concepts. Otto Bock is a trademark of Otto Bock HealthCare. Specifications are subject to change without notification.  
Form No. 13-195  
Rev. 10/17  
171005

